

# POULTRYLINE



Readership — Poultry Wide

VOLUME - 22

ISSUE - 11

ANNUAL SUBSCRIPTION RS. 500/-

NOVEMBER 2022

Rs. 50/-



*Imbalanced Gut  
leads to production loss!*

Presenting...

*The next generation synbiotic*



Multi-strain  
probiotic

Herbal  
prebiotic

Phytobiotics

Himalaya<sup>®</sup>  
SINCE 1930

## HimFlora<sup>®</sup>

POWDER

FEED SUPPLEMENT

A unique blend of synbiotics with phytoactives  
for optimum gut health



- Balances intestinal microbiota to maintain gut health
- Boosts immunity and improves digestion for optimum performance

Net Wt. 5 kg

**Himalaya Wellness Company**

Makali, Bengaluru 562 162, India

[www.himalayawellness.com](http://www.himalayawellness.com)

E-mail: [write.to.us@himalayawellness.com](mailto:write.to.us@himalayawellness.com)



## Trust Forms The Core Of Our 'BONDS'...

When it comes to setting higher benchmark of performance as compared to other chelated mineral sources; producers across the world spread over 100 countries, trust MINTREX®.

MINTREX® is the only globally available bis-chelate where one molecule of metal is attached to two molecules of HMTBa (2 hydroxy-4-methylthio-butanoic acid) by strong bonds. The unique, stable and neutrally charged structure of MINTREX® minerals lead to higher absorption, bioavailability and production performance as compared to other mineral sources. The uniqueness of MINTREX® minerals has been recognized by various international bodies like EU and AAFCO by classifying them as a distinguished class of minerals.

**Zn**  
80% Methionine Value

**CU**  
78% Methionine Value

**Mn**  
76% Methionine Value

## Building 'BONDS' Stronger

[www.novusint.com](http://www.novusint.com)



**\*TMO Plus**  
(For 'Trace Mineral Optimization' in Poultry)



\*TMO Plus standard premix from Novus® contains MINTREX® minerals as source of Zn, Cu and Mn. Novus® and MINTREX® trademarks of Novus International and are registered in the United States and other countries. 2022 Novus International, Inc. All rights reserved.



# NaturoGen™ 510



With the highest developed natural solution :

## Fit chicks perform better!

**NaturoGen™ 510** is the phytogenic feed additive for profitable poultry production, naturally. The innovative phytogenic formulation is based on in-depth knowledge, broad experience and extensive research.

Benefit from a safe and efficient product :

- Improves nutrient digestibility and feed conversion ratio
- Supports intestinal health
- Enhances body weight & egg mass
- Improves bone strength
- Significant reduction of ammonia
- ROI of minimum 3 : 1

performing nature



For further information please contact :  
VENKY'S (INDIA) LIMITED  
ANIMAL HEALTH PRODUCTS DIVISION  
An ISO 9001 Certified Company



"Venkateshwara House", S.No.: 114/A/2, Pune - Sinhad Road, Pune - 411 030 (India) Tel : 020 - 24251803  
Fax : +91-20-24251060 / 24251077 www.venkys.com e-mail : ahp@venkys.com

# The RIGHT FEED



## Suguna Broiler Feed



- ✓ Better Livability
- ✓ Faster Growth
- ✓ Better FCR

PBS | BS | BF | BC 7.5% | BC 10%  
BC 35% | BC 40%



## Suguna Layer Feed



- ✓ Better Livability
- ✓ More Eggs
- ✓ Lowest Feed Cost

LSC | LCC | LGC | LLC | LC 35% | LC 40%



## Suguna Country Chicken Feed



- ✓ Balanced Feed
- ✓ Rich in Nutrients
- ✓ Better Weight Gain

CCS | CCF | CCBP



For Trade Enquiries: 96504 37700 | [www.sugunafeeds.com](http://www.sugunafeeds.com)





## Getting Turmeric & Curcumin confused? Here's the real story.



Start with the turmeric root, the plant that provides curcumin.



Some companies do extract the curcumin from turmeric, but do nothing to ensure absorption.



Curcumin blendig with turmeric essential oil containing aromatic turmerone boosts absorption

Get Results !



No more confusion about turmeric & curcumin!

Comprehensive Solution to Raise Chicken Naturally in Challenging Sessions

# Curmint®

Blend of Ancient Knowledge With Modern Technology

### Composition

- Bio-Active Curcumin • Menthol
- Turmerones • Fortified with Polyphenols, Antioxidants & Fatty Acids.

Presentation : 25 Kg Bag

### Usage

0.5 Kg / Ton of feed in all stages of Chickens (Layers/ Broilers and Breeders) or as directed by Poultry Nutritionist

**nutridian®**  
ANIMAL HEALTH  
Leading Innovation Through Technology  
ISO 9001:2015 certified company  
and cGMP certified company

### NUTRIDIAN ANIMAL HEALTH

A unit of Kanad Chemicals Pvt. Ltd.

12A, Regency Park A, Eden Woods, Pokhran Road No 2, Thane (W) - 400 610.

Please contact us at : Customer Care No.: 0251-2611525

Email : [info@nutridian.in](mailto:info@nutridian.in) • Website : [www.nutridian.in](http://www.nutridian.in) • [www.kanadchem.com](http://www.kanadchem.com)



**KCPL**  
Manufacturer & Exporter  
SINCE 1971

# PARIVARTAN **GEN** **NEXT**

*Building the Future of Poultry with Technology*



**200 CRORE INVESTMENT BY IB GROUP**

- **START-UP BUSINESS OPPORTUNITY FOR YOUNG INDIA**
- **FIRST EVER SUCH INVESTMENT SCHEME IN INDIA**
- **GLOBALLY ACCLAIMED NEXT GENERATION POULTRY HOUSING TECHNOLOGY**

**25% INVESTMENT BY IB GROUP \***

## 3 BEST PLANS TO SUIT YOUR INVESTMENT NEED

SR.NO.	EC HOUSE TYPES	EC HOUSE SIZE	BIRD CAPACITY	PER BIRD COST (₹)*	TOTAL COST	ABW/BIRD (KG)**	MIN GC/KG (INR)***	COMMITTED MIN BATCHES PER YR	ANNUAL EARNINGS	APPROX PAY BACK IN YEARS
1	HOUSE TYPE-1	45'x330'	21,808	475/-	1,03,58,800	2	13	6	34,02,048	3.0 yrs
2	HOUSE TYPE-2	45'x270'	17,654	520/-	93,21,312	2	13	6	27,54,024	3.4 yrs
3	HOUSE TYPE-3	45'x220'	14,192	576/-	81,74,592	2	13	6	22,13,952	3.7 yrs

\* Prices are valid until 30<sup>th</sup> of September 2022 and exclusive of taxes, erection, installation, transportation charges, subject to any revision from the company.

\*\* ABW- (Average Body Weight) as per industry average norms .

\*\*\* GC- (Growing Charges) will be revised post completion of every 8 batch based on the electricity charges and labour charges.

## BENEFITS FOR INVESTORS

- 25% investment by IB Group .
- 100% interest subvention and Moratorium for 3 years by IB Group.
- Next Generation Globally tested best in class Environment Controlled Broiler House farming technology ROI in first 3 Years.
- Technical Training and hand holding for new startup farmers and all-round the year support with 25years plus IB technical expertise
- Safe Investment with IB Group for business assurance



**ABIS EXPORTS (INDIA) PVT. LTD.,** IB Group Corporate House, Indamara, Rajnandgaon (CG) - 491 441.

Contact : 91 91091 12121 Email : parivartannxtgen@ibgroup.co.in

www.ibgroup.co.in





## VALUE CONSULTANTS

*Contact for:*

- ✓ **Advisory Services**
- ✓ **Training programs**
- ✓ **Transfer of Technology**
- ✓ **Investment Opportunities**
- ✓ **Senior level Appointments**
- ✓ **Innovative technologies into India**
- ✓ **International Sourcing of Amino Acids,  
Feed Additives, Specialty Products**

**Selvan Kannan**

 **+91 98480 46244**

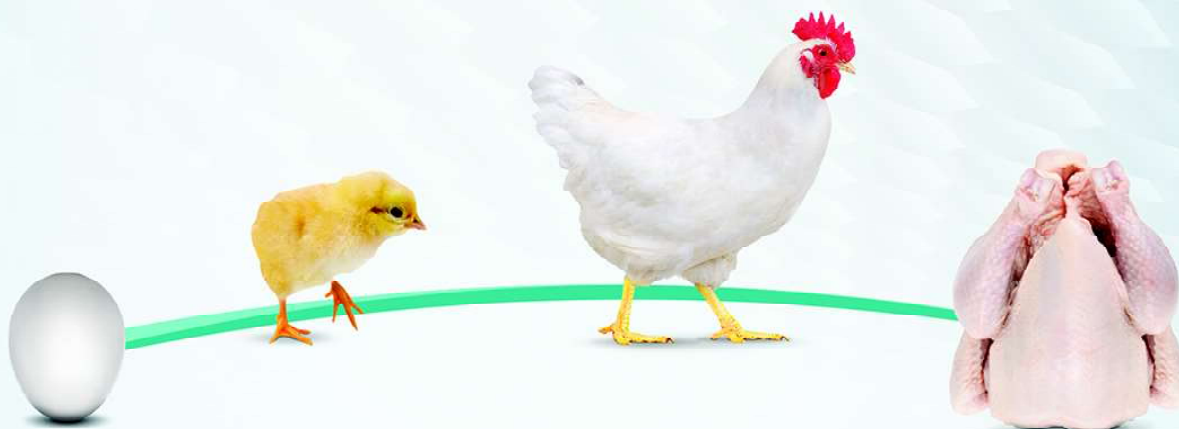
Email: [selvan@valueconsultants.co](mailto:selvan@valueconsultants.co), [Business@valueconsultants.co](mailto:Business@valueconsultants.co)  
Website: [www.valueconsultants.co](http://www.valueconsultants.co)

301, Siva Sai Apartments, Road #9, West Marredpally,  
Secunderabad - 500 026. Telangana. INDIA



Now Available  
in India

A LIFETIME OF IMMUNITY.



FROM HATCH

TO HARVEST

One single vaccine dose of VAXXITEK<sup>®</sup> HVT+IBD provides lifelong immunity<sup>1</sup> which leads to healthy birds, better performance and operational profits<sup>2</sup>.  
Contact your local Boehringer Ingelheim local representative for more information.

VAXXITEK<sup>®</sup> is a registered trademark of Boehringer Ingelheim group in United States of America and elsewhere.

1 & 2 Data on file.

Boehringer Ingelheim India Pvt. Ltd.  
Unit No. 202 and part of Unit no. 201, 2nd Floor, Godrej 2, Pirojsha Nagar  
Vikhroli (E), Mumbai 400079 | Tél.: (+91) 22 71456477





# POULTRY LINE

## పావులైన్

Editor : **B. SHIV SHANKAR**  
 Associate Editor : **B. KALYAN KUMAR**  
 Sub Editor : **R. SHAILESH NAATH**  
 Sr. Technical Editor : **Dr. M.A. MUJEEB ATHER**  
 Technical Editor : **Dr. MANOJ SHUKLA**

### TECHNICAL EDITORIAL BOARD

Dr. P.K. SHUKLA, Jt. Commissioner Poultry, G.O.I., New Delhi.  
 Dr. J.L. VEGAD, Phoenix Group, Jabalpur.  
 Dr. V. RAMASUBBA REDDY, Retd. Professor, Agri. Uni. Hyd.  
 Prof. G. DEVEGOWDA, M.V.Sc., Ph.D., (USA), B'lore.  
 Dr. D. CHANDRASEKARAN, Prof&Head, Vet.Col.& Res.Ins. Nammakal.  
 Dr. A.U. QIDWAI, Dy. Director, Directorate of A.H., Badshahbag, Lucknow  
 Prof. DEVAREDDY NARAHARI, M.V.Sc., Ph.D.Chennai.  
 Dr. V. KRISHNA RAO, Poultry Consultant, Hyderabad.  
 Dr. S.V. RAMA RAO, Scientist RJNR, Hyderabad.  
 Dr. A.K. PANDA, Scientist, PDP, RJNR, Hyderabad.  
 DR PANKAJ DEKA, AAU, Khanapara, Guwahati  
 DR MIHIR SARMA, AAU, Khanapara, Guwahati  
 Dr. B.S. VENKATARAMI REDDY, Prof. & Head, Hebbal, B'lore.  
 Dr. SUJIT KULKARNI, Sales Director, Biomin Singapore Pte Ltd.  
 Dr. JYOTI PALOD, Professor, C.V.A.Sc., Pantnagar.  
 Dr. RAMDAS S. KAMBALE, SBU Head & Chief - AHD - Chembond Chemicals  
 Dr. S. NANDI, B.V.Sc. & A.H, M.V.Sc., Ph.D., IVRI, Izatnagar, U.P.  
 Dr. D. SAPCOTA, M.V.Sc. (APAU) Ph.D. (IVRI) Guwahati.  
 Dr. B.K. SWAIN, M.V.Sc., Ph.D., Ela, Goa.  
 Dr. NIRANJAN KALITA, M.V.Sc., Ph.D, Professor, Guwahati.  
 DR. S. K. KHURANA, Associate Prof., COVAS, Palampur (HP)  
 Dr S K MUKHOPADHAYAY, Asso. Prof.(Vety Pathology) WBUAFS, Kolkata.  
 Dr SUBHA GANGULY, Scientist, AICRP-PHT, Kolkata Centre.  
 Dr LOKESH GUPTA, Tech Mgr-Poultry, Alltech India.  
 DR VIJAY SWAMI, M.V.Sc., A.H., Country Manager, SunHY Biology Co. Ltd.  
 DR ATUL BHAGWANSINGH RAJPUT, DGM, Sales, Optima Lifescience

B. Shiv Shankar - Managing Partner  
 B. Kishore Kumar - Media Executive  
 B. Shailajaa - Circulation Manager  
 J. Upender Rao - Marketing Manager South Telangana  
 Sathyendranath - Marketing Manager North Telangana  
 Hari Prasad - Head, Designing Department  
 P.N. Nithin - Incharge - Photography  
 K. Raghuramaraju - Publication Consultant (09440231211)

### CONTENTS

1. ABTL ..... 13
2. Importance of Anatomy .....Breeding Farm  
- Anil Deka ..... 14-18
3. Importance to improve ..... chick mortality  
- Dr. Mahesh Rajurkar ..... 23-24
4. Jugalbandi ... feed digestion & gut health  
- Dr. Ramdas Kambale ..... 25-26
5. Single-Stage incubation ...top quality ..... 27-28
6. World Egg Day at Hyderabad ..... 29-30
7. Tara Group Field Officials Get Together ..... 35-39
8. Artificial Insemination in Poultry  
- S. K. Joshi ..... 40-42
9. CLFMA ..... 48-65
10. Vets In Poultry (VIP) ... World Egg Day ..... 69-73
11. NECC Egg Rates ..... 75
12. Broiler Lifting Rates ..... 76
13. WELTEC ..... 77-78

**Poultry Line may not necessarily  
 subscribe to the views expressed in  
 the Articles published herein.**

### TEJASVI PUBLICATIONS

2-1-444/16, 1st Floor, O.U.Road, Nallakunta, Hyd. - 500 044.  
 Ph: 040-2761 0027, Cell : 98493 68003, 63096 77047  
 www.tezasvipublications.com  
 E-mail : tezasvipoultryline@gmail.com  
 tejasvi\_poultryline@rediffmail.com

## INDEX OF ADVERTISEMENTS

Particulars	Page No.	Particulars	Page No.
ABTL	12	Novus Animal Nutrition (India) Pvt Ltd.	Title Cover II
Abis Exports (India) Pvt. Ltd.	4	Nutridian Animal Health	3
Animal Wellness Products	44	Optima Life Sciences Pvt. Ltd.	10
Avitech Nutrition	81	Poultry consultancy services	65
ATA Packaging	42	Provet Pharma Pvt Ltd.	79
Bhuvana Nutri Bio Sciences	32	Regen Bio-Corp	46 & 47
Bentoli AgriNutrition India Pvt. Ltd.	33	Rossari Biotech Limited	67
Boehringer Ingelheim India Pvt. Ltd.,	6	Sai Krishna Plastic Industries	84
DSM Nutritional Products India Pvt Ltd.	31	Shri Laxmi Ganapathi Agencies	18
Eco-Mix	8	S.S. Associates	26
Exotic Bio Solutions Pvt. Ltd.	66	Sri Lakshmi Packaging Company	74
EggMaster Agro Products	82	Srinivasa Farms Private Limited	43
EggMaster Poultry Breeders	83	Suguna Foods	Inside Title Fold 4
Glocrest Pharmaceutical Pvt. Ltd.	22	Uttara Impex Pvt. Ltd.	11
Hipra India Pvt. Ltd.	21	Value Consultancy	5
Himalaya Wellness Company	Inside 86 & Title Cover I	VHPL	Inside 9, Title Fold 3 & Title Cover IV
India Poultry Expo 2022 : Nashik	80	Vetoquinal India Animal Health Pvt Ltd.	68
Indian Herbs Specialities	45	Wedding Bells	74
Karamsar	28	Zeus Biotech Limited	34
Lubing India Pvt. Ltd.	20	Zoetis India Limited	19
MSD Animal Health	Title Cover III	Zenex	85



### CUT SHORT YOUR FEED COST

# Eco-Mix

LEAST COST FEED FORMULATION SOFTWARE FOR  
POULTRY, DAIRY AND ANY KIND OF LIVESTOCK

Y.SRINIVAS

Cell : +91-9849039200



LOGIC SOFT SOLUTIONS

Flat No. 101, H.No. 1-1-565, Raghavendra Apts., New Bakaram,  
Musheerabad, Hyderabad - 500.020. (A.P.) INDIA  
E-mail: [contact@logicsoftsolutions.com](mailto:contact@logicsoftsolutions.com) [www.logicsoftsolutions.com](http://www.logicsoftsolutions.com)





# BB CLASSIC ORGANIC TRACEMIN<sup>®</sup>

Classic pack of Organic Trace Mineral for Broiler Breeders

## Enhances Trace Mineral Utilization



Metal (specific amino acid complex)



(Combine Influence - pH of water layer of Intestine mucosa + Strength of mineral receptors breaks the bond of molecules in small intestine)

Most Bio-available  
form of Tracemineral  
and Methionine  
absorbed separately

- Improves Egg Shell Quality.
- Improves Maternal Antibodies Transfer and Immunity.
- Improves Performance and Livability of the Progeny.
- Enhances Trace Mineral Concentration in Egg Yolk.
- Reduces Lipid Oxidation in Storage Eggs.
- Improves Fertility and Hatchability.
- Improves Immunity and Disease Resistance of Progeny.



### VENKATESHWARA B.V. BIOCORP PRIVATE LIMITED

(An ISO 9001:2015, OHSAS 18001:2007 & GMP Certified Company)

Venkateshwara House', S. No. 114/A/2, Pune-Sinhagad Road, Pune-411030

Tel.: (020) 24251803, Fax: +91-20-24251060/24251077, Website: [www.venkateshwarabvbiocorp.com](http://www.venkateshwarabvbiocorp.com)

Maximize the True Potential  
of **Betaine** with



# OptiBetaine

A value added Betaine with **99 % Methyl Donor Value (MDV)**



## OPTIMA LIFE SCIENCES PVT. LTD.

### CORPORATE OFFICE

PNO 47/2/2, BL 44,  
LIC Colony, Parvati,  
Pune - 411009, Maharashtra.  
Tel: 020-24420720  
info@optimalife.in | www.optimalife.in

### OPTIMA INTERNATIONAL BV

Binnenstraat 27 6674 BX, Herveld,  
the Netherlands  
Ph. +614193538  
[export@optimalife.in](mailto:export@optimalife.in)  
[www.optimalife.eu](http://www.optimalife.eu)

### OPTIMA GLOBAL FZ LLC

A1-608B, Building no. A1  
Al Hamra Industrial Zone-FZ, RAK  
United Arab Emirates  
info@optimalife.ae





# UT GlysoMin **GOLD**



Better Availability Better Performance With Glycinated Trace Minerals



25 Kg Bag

## UTTARA IMPEX PVT. LTD.

Feed Supplement Division, Venkateshwara House, Pune.

For trade Enquiry Contact : North India – Mr. Hariom Singh Chauhan / +919552526901,  
East India – Mr. Kunal Goswami -/+91888858839, T.N – Mr. Michaelsamy -/+918778408835,  
Maharashtra – Swapnil Ballal -/+919689948713, Telangana/ Andhra Pradesh  
Orissa – Mr. Shankar Reddy -/+918008802148

Collaboration with :  **Pancosma**  
makes sense

 **B-TRAXIM**  
Fe  
Cu  
Zn  
Mn



# FROM NICHE TO MAIN STREAM TECHNOLOGY WE PROVIDE INNOVATIVE SOLUTIONS



## Enzymes

### NSP Enzymes

#### XylaOpt™

Intrinsically Thermostable Xylanase  
with Optimal Energy Release.

#### BG-Xylan™

Targeting Arabinoxylans

#### BG - MANNAN

Breaking galactogluco-mannan

### Optimized Enzyme Blends

#### PRO-MaXYL™

Maximizing Profits Through  
Optimal Nutrient Utilization

#### PROMAXYL-α

Maximizing Profits Through Optimal Nutrient Utilization

#### BIOGRAIN SPECIAL CB3

Maximizing Nutrient Utilization

### Phytase

#### ADPHOS®

Microgranulated Velocious Phytase

#### LayZyme™

Cost-effective solution to maximize layer performance

#### AβM Forte™

A Unique Energy Conserving Enzyme Complex of β-mannase

#### HENZYME -CL

Proprietary Formulation for Layers

### Immunomodulators

#### IMMUNOTECH™

The Systemic Immunity Developer

#### IMMUNOTECH™ FORTE

The Fortified Systemic Immunity Developer

#### IMMUNOTECH™ FORTE-C

Stress Reliever and Immunity Modulator

### Protease

#### BG-PRO™

Optimizing Protein Digestion  
and Amino Acid Utilization

### Probiotics

#### CosBac™

Total Gut Health Solution

#### CosBac™ Plus

Total Gut Health Solution

#### Bactalis™

A Potent Gut Health Stabilizer

### Nutraceuticals

#### BPPS FORTE™

Fortified bioactive peptides for  
optimal amino utilization

#### BEST-PRO

Bioavailable Protein with Probiotics

### Acidifiers

#### ACIPLEX™

Optimized Acidification to  
Amplify Growth Performance

# ABTL

+91 20 2729 1020 / 21 | info@abtl.in | www.abtlenzymes.com



# ABTL

## Glimpse from the 26 years of World Egg Day Celebration on 14<sup>th</sup> Oct. 2022

Eggs for kids are an excellent source of protein, iron, vitamins and fats.

On the 26 years of World Egg Day, ABTL visited a Sahgami Foundation that helps workers/labourers children for their future education and other common issues. There we distributed eggs and the pamphlets - showing the benefits of eggs and educating them about the importance of having an egg in their regular diet.

**ONE EGG PER DAY PER CHILD !!**

**Mr. Sumit Sipany**

Product & Marketing Executive, ABTL



## About Sahgami Foundation - Masti Ki Pathshala

Masti ki Pathshala is a small school started by Sahgami foundation 5 year back in Maske Vasti, Ravet, Pune. The school has been started with the intention to give basic education to construction worker's kids and to admit them to nearby government schools. So far we have admitted around 450+ kids in government school.

**Mrs. Prajakta Rudrawar**

Founder & Director, Sahgami Foundation

# Importance of Anatomy of Visceral Organs of Fowl for Supervisor of Broiler Chicken and Poultry Breeding Farm

Anil Deka<sup>1\*</sup>, Mihir Sarma<sup>2</sup>, B.N. Bhattacharyya<sup>3</sup>, J. Kachari<sup>4</sup>, U. Barman<sup>5</sup>, S. Choudhury<sup>6</sup> and P. Talukdar<sup>7</sup>

1) Assistant Professor, Department of Anatomy & Histology, College of Veterinary Science, Assam Agricultural University, Khanapara, Guwahati, Assam.

2) Junior Scientist, Directorate of Research (Vety.), Assam Agricultural University, Khanapara, Guwahati, Assam

3) Professor cum Deputy Director (Vety.), College of Veterinary Science, Assam Agricultural University, Khanapara, Guwahati, Assam

4) Assistant Professor, Veterinary Clinical Complex, 5) Assistant professor, Veterinary Clinical Complex, College of Veterinary Science, Assam Agricultural University, Khanapara, Guwahati, Assam, 6) Assistant professor, Livestock Production and Technology, 7) Assistant Professor, Animal Nutrition, College of Veterinary Science, Assam Agricultural University, Khanapara, Guwahati, Assam

\*Corresponding author: [dranilvet01@gmail.com](mailto:dranilvet01@gmail.com)

## Abstract

Poultry meat is very delicious dish and tasty meat. It is highly demanded among the non-vegetarian people. In poultry, maximum diseases occurred in the visceral organs of poultry that's why anatomy of visceral organs is very important. If we know details about the anatomy of visceral organs, then we can easily identify the different diseases of layer as well as broiler chicken.

farm in one day for post mortem of dead birds, during that particular period for post mortem of those dead birds' identification of organ is necessary for diagnosis of diseases control regime. Hence the present study was designed.

## Materials and Methods:

The birds were collected from the Instructional Livestock Farm, Poultry, College of Veterinary Science, Assam Agricultural University, Khanapara, Guwahati, Assam to the Department of Anatomy &

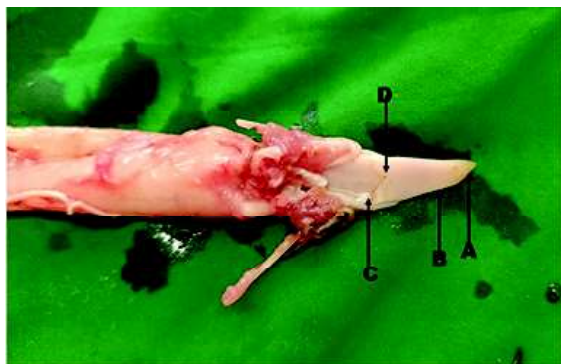
## Introduction

Now a days, poultry industry is the fastest growing industry in India. Poultry meat and egg is very popular among the people of India. In North-East region 90% people is non-vegetarian. The position of India in poultry egg production in 3<sup>rd</sup> and 7<sup>th</sup> in chicken meat production in world (Watt Executive Guide, 2015). But, due to some technical problem in poultry industry, production is still less compared to other country. It happens due to lack of proper knowledge of anatomy of domestic birds of supervisor in field condition. Because, sometimes doctor can not able to visit the all-integrated poultry

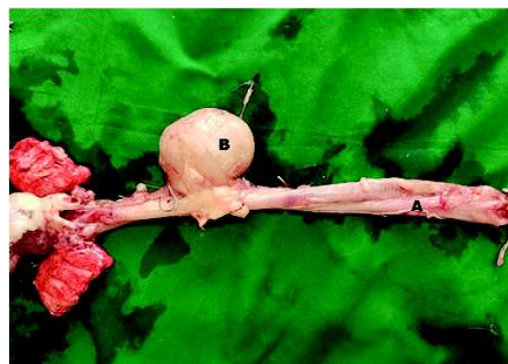


Fig.1. Photograph showing the choanal opening of hard palate of fowl.





**Fig.2. Photograph showing the apex (A), body (B), root (C) and conical papillae (D) of tongue of fowl.**



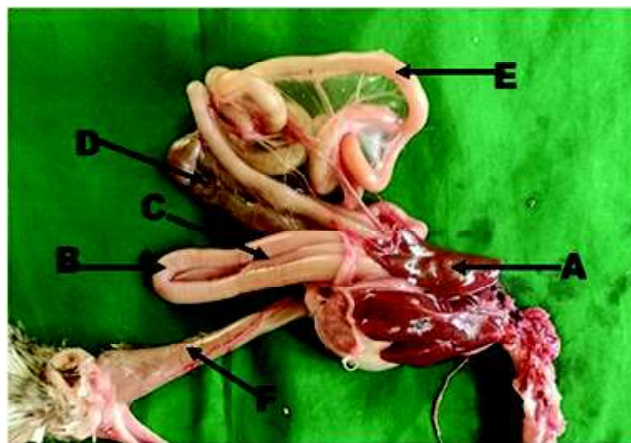
**Fig.3. Photograph showing the oesophagus (A) and crop (B) of fowl.**

Histology, College of Veterinary Science, Assam Agricultural University, Khanapara, Guwahati, Assam. After collection, the birds were sacrificed as per the standard method Gracy (1968). Then birds were placed in a clean dissecting table and the feathers, skin, abdominal muscles and fascia were removed carefully without disturbing the visceral organs of the birds. Then the in-situ and ex-situ position of the visceral organs of birds were studied for the benefit of supervisor of the poultry farm.

**Result and Discussions:**

In present investigation, six numbers of birds were utilized for study of some important organs of digestive system, respiratory system, lymphatic system, urinary system, female reproductive

system and male reproductive system. The important organs of digestive system composed of tongue, oropharynx, oesophagus, crop, stomach (proventriculus and gizzard), duodenum, jejunum, ileum, caecum and colo-rectum. The shape of the tongue of fowl and broiler chicken were triangular in shape. The tongue was situated in the oral cavity. The hard palate of the oral cavity contained choanal opening (Fig.1). The tongue of fowl and broiler chicken were consisted of three parts viz., apex, body and root (Fig.2). The apex of the tongue was attached the floor of the oral cavity by a mucosal fold known as frenulum linguae. The root of the tongue contained one row conical papillae which was directed in transverse direction. Then, the oral cavity was connected to the oropharynx. The oropharynx was communicated to the oesophagus.



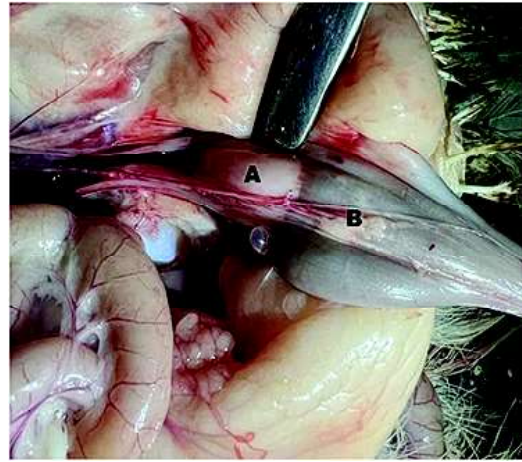
**Fig.4. Photograph showing the liver (A), duodenum (B), pancreas (C), caecum (D), jejunum (E) and colo-rectum (F) of fowl.**



**Fig.5. Photograph showing the proventriculus (B), gizzard (C) and spleen (A) of fowl.**



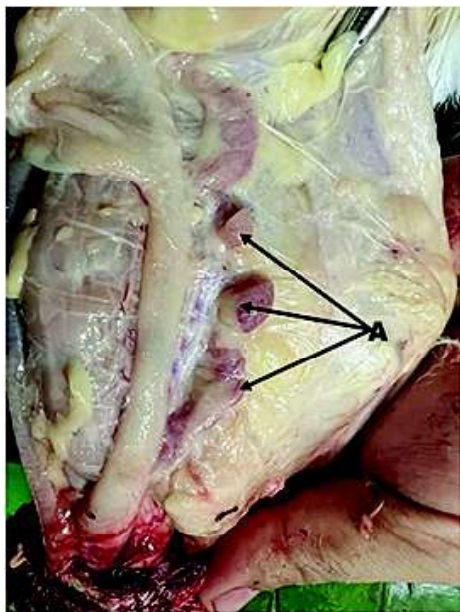
**Fig.6. Photograph showing the trachea (A), syrinx (B) and lung (C) of fowl.**



**Fig.7. Photograph showing the bursa of Fabricius (A) and cloaca of fowl.**

The oesophagus before enters into the thoracic inlet enlarge to form a crop where fermentation of food particles occurred (Fig.3). Then oesophagus communicate to the stomach. The stomach composed of two parts viz., glandular stomach and muscular stomach. The glandular stomach is also known as proventriculus. The shape of the proventriculus (Fig.5) was spindle shaped and the inner wall of this organ contained mucosal gland. These findings were in accordance with the findings of Nickel *et al.*, (1977) in domestic fowl. The muscular stomach is known as gizzard. The inner

wall of the gizzard contained one protein layer known as koilin. Similar observation was reported by King andMclelland (1975) in domestic fowl. The mechanical grinding of food particles occurred in gizzard. The intestine composed of duodenum, jejunum, ileum, caecum, colo-rectum. The shape of duodenum was "U" shaped and it was composed of proximal descending, and distal ascending part of duodenum. These findings were total agreement with the findings of MacLellan (1977) in domestic fowl. Maximum absorption of the nutrient occurred in the duodenum (Fig.4). Pancreas was situated

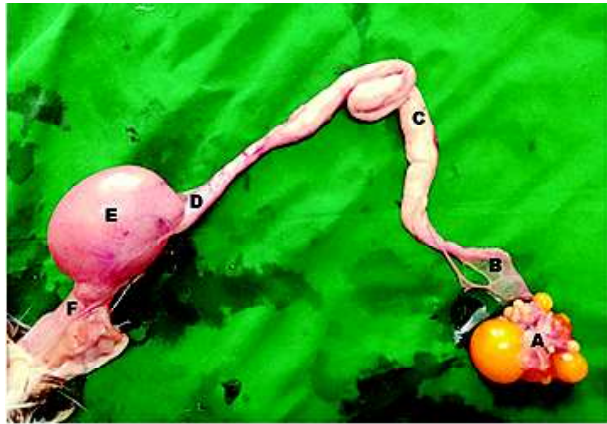


**Fig.8. Photograph showing the thymus of fowl.**



**Fig.9. Photograph showing the cranial lobe (A), middle lobe (B) and caudal lobe (C) of kidney of fowl.**

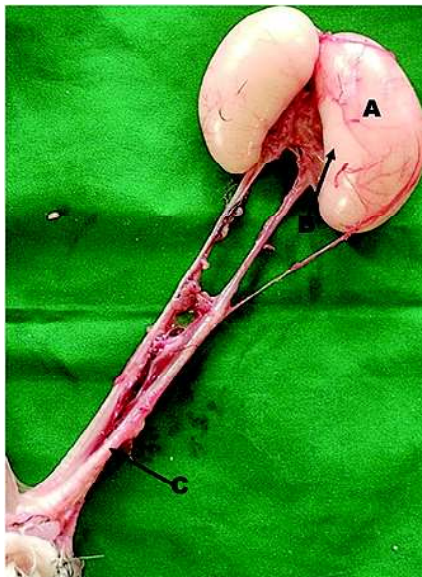




**Fig.10. Photograph showing the ovary (A), infundibulum (B), magnum (C), isthmus (D), uterus (E) and vagina (F) of fowl.**

between the ascending and descending loop of duodenum. Jejunum contained numbers of small shaped loop and it was the longest segment of the intestine. The length of the ileum was similar with the length of the caecum. The one pair of caeca was finger like structure located on either side of the colo-rectum. The colo-rectum was the last segment of the intestine. The colo-rectum was opened in the coprodeum of the cloaca.

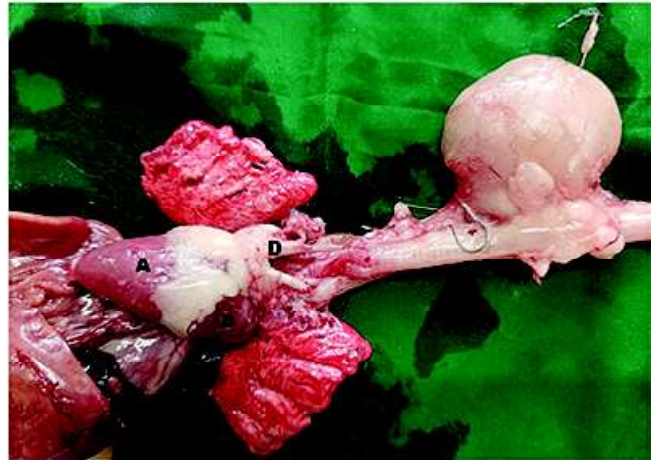
The primary organs of the respiratory organs were trachea, syrinx and lung (Fig.6). The opening of the larynx was triangle and the caudal border contained



**Fig.11. Photograph showing the testes (A), epididymis (B) and vas deference (C) of fowl.**

one row of papillae. The trachea of fowl contained 120 numbers of ring. The tracheal were complete. The syrinx was the organ of phonation in avian species and it contained cartilage. The dorsal surface of the lung contained cut mark of the ribs and the ventral surface was smooth. Similar findings were reported by King and Mecland (1975) in fowl.

The major lymphoid organs of fowl and broiler chicken were spleen, bursa of Fabricius and thymus. The shape of the spleen (Fig.5) was round or oval in shape and it was located in right side of the proventriculus. The bursa of Fabricius was bell shaped dilation located dorsal to the proctodaeum of the cloaca (Fig.7). The thymus was contained



**Fig.12. Photograph showing the ventricle (A), auricle (B) and aorta (D) of heart of fowl.**

5-9 numbers of thymic lobes and located on either side of the neck in subdermal connective tissue (Fig.8). Similar observation was reported by Nickel *et al.*, (1977) in fowl.

The heart is the vital organ of circulatory system. It is composed of base, apex and body. It has ventricle and atria (Fig.12). The base of ascending and descending aorta arises from the base of the heart.

The vital organ of urinary system was kidney (Fig.9). The kidney was situated in ventral aspect of the synsacrum. The lobes of the kidney composed of three lobes *viz.*, cranial, middle and caudal. Similar



findings were reported by King and McLelland (1975) in fowl.

The female reproductive system composed of ovary and oviduct. The oviduct consisted of infundibulum, magnum, isthmus, uterus and vagina (Fig.10). The infundibulum had two parts viz., funnel parts and tubular parts. Infundibulum is the site of fertilization in avian specie. The magnum was the longest and most coiled part of the oviduct. It produced albumin for the egg. Isthmus is narrow constricted part which produces shell membrane for egg. Uterus is sac like structure and it produce shell for the egg. The vagina is tightly bind by ligament. The oviposition occurred in vagina and it open into the erodium of cloaca. These findings were in accordance with the findings of King and McLelland (1975) in fowl.

The male reproductive system consisted of epididymis, testes, vas deference and phallus (Fig.11). The testes are situated inside the abdominal cavity below the synsacrum and it is attached to the synsacrum by a ligament. The shape of the testes is bean shaped. The epididymis is not well developed like mammals and it is attached to the testes. The vas deference is tortuous and it is arising from the testes and open into the phallus. The phallus is situated in to the ventral lip of the cloaca. These findings were total agreement with the findings of King and McLelland (1975) in fowl.

**Conclusion:** The important organs of digestive system composed of tongue, oropharynx, oesophagus, crop, stomach (proventriculus and gizzard), duodenum, jejunum, ileum, caecum and colo-rectum. The primary organs of the respiratory organs were trachea, syrinx and lung. The major lymphoid organs of fowl and broiler chicken were spleen, bursa of Fabricius and thymus. The vital organ of urinary system was kidney. The female reproductive system composed of ovary and oviduct. The oviduct consisted of infundibulum, magnum, isthmus, uterus and vagina. The male reproductive system consisted of epididymis, testes, vas deference and phallus. This study will be helpful to the poultry farmer, scientist and supervisor for diseases control regime and production of poultry meat as well as egg.

**Reference:**

Kings, A.S. and McLelland, J. (1975). Outline of Avian anatomy. Bailler Tindall, London. pp 67-69.

Kings, A.S. (1977). Aves urogenital system. In: Sisson and Grossman's the anatomy of the domestic animals. Robert Getty(eds.), 5<sup>th</sup>Edn. Vol.2, W.B.Saunders Co., Philadelphia. P.1937.

Gracey, J.F. (1968). Bleeding method of slaughtering- slaughter. Meat Hygiene. 8<sup>th</sup>Edn. pp. 144-145.

Nickel, R.; Schummer, A. and seiferle, E. (1977). Anatomy of the Domestic Birds. Verlag Paul Parey, Berlin, Hamburg. pp 75-77.

## SHRI LAXMI GANAPATHI AGENCIES



P.L. Ganapathi

We undertake to purchase and sell the  
**Growers and Layers on commission basis.**

We also supply growers of all kinds of breeds ranging from 5<sup>th</sup> to 20<sup>th</sup> weeks

Available on all seasons

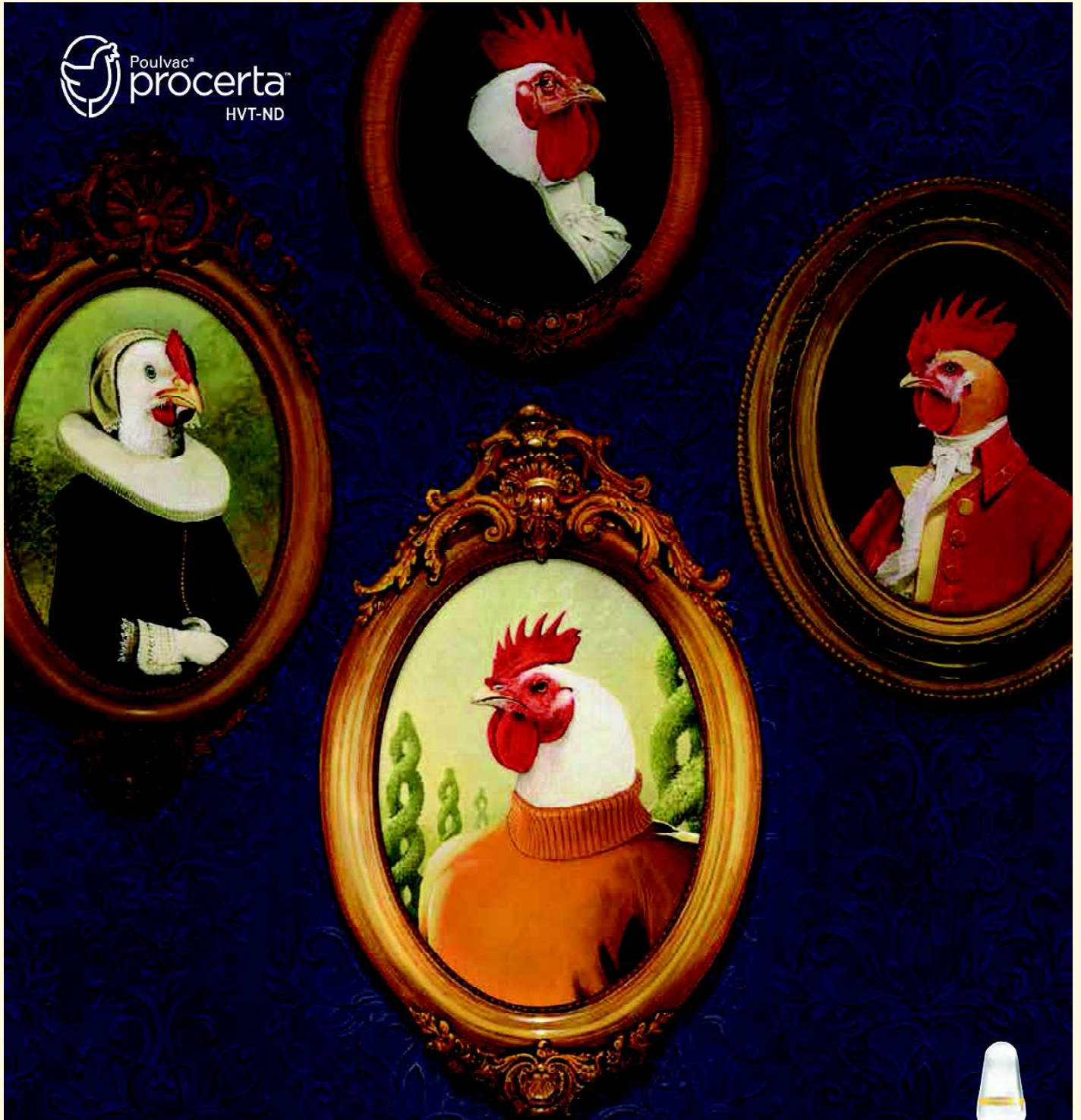
Contact us for purchasing / selling the poultry farms

**Shri Laxmi Ganapathi Agencies**

Attili, West Godavari District – 534 134, (A.P).

**(M): 9666939299 and 9849195410**

 Poulvac<sup>®</sup>  
procerta<sup>™</sup>  
HVT-ND



## MEET THE NEWEST MEMBER OF THE ZOETIS POULTRY LINEAGE

### Introducing Poulvac<sup>®</sup> Procerta<sup>™</sup> HVT-ND.

The latest HVT-ND vector designed to protect your flock against Marek's disease and Newcastle disease.

When immune response is **high**, **trust** and **confidence** are too. Delivered via the Inovoject<sup>®</sup> System, an Embrex<sup>®</sup> Biodevice from Zoetis, this new vector offers competitive onset of immunity against Newcastle disease<sup>1</sup>. For details and data please visit Poulvac<sup>®</sup> Procerta<sup>™</sup> com.

<sup>1</sup> Data on file, Study Report No. B815R-US-18-A46, Zoetis Inc. All trademarks are the property of Zoetis Services LLC or a related company or a licensor unless otherwise noted. © 2020 Zoetis Services LLC. All rights reserved.

ZOETIS INDIA LTD : 31, 3<sup>RD</sup> FLOOR | KALPATRU SYNERGY | OPP. GRAND HYATT, SANTACRUZ (EAST), MUMBAI- 400 055;  
OFFICE: 022 66513800; FAX: 022 266513950 | VISIT US: ZOETIS.COM



**zoetis**



**WANTED  
DISTRIBUTORS**

**LUBING**

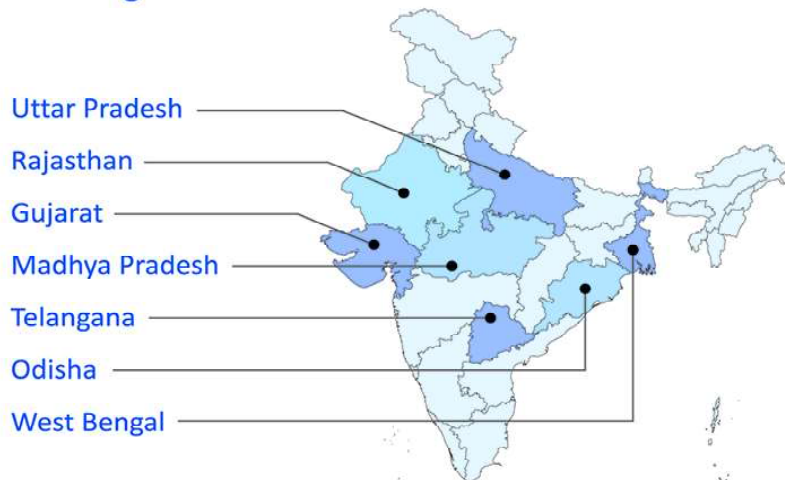


**THE ORIGINAL!**



Since 2001, Lubing India Pvt. Ltd. is most preferred brand for Nipple Drinking System for Broilers, Layers & Breeder farm.

To cater to its already established markets as well as to tap the areas with huge potential, **Lubing India is looking for financially sound distributors in following states:-**



- **Drinking System**  
For Chicks & layers In Cages
- **Top Climate System**
- **Conveyor System**  
For Egg Transportation

**LUBING INDIA PVT. LTD.**

Contact: +91 9975440407  
+91 7387007677

Email : sales1@lubingindia.com  
sales2@lubingindia.com  
URL : www.lubingindia.com



# EVALON<sup>®</sup>

With HIPRAMUNE<sup>®</sup> T

Live attenuated vaccine  
against avian coccidiosis

---

## A LIFETIME OF IMMUNITY

---

Powered by  
**SMART**  
VACCINATION



The Reference  
in Prevention  
for Animal Health

**HIPRA INDIA**  
#209, 2nd Floor Platinum Square (next to Hyatt Regency Hotel), Vascon Engineers Ltd., S.  
No. 30/3A, Viman Nagar Pune 411014, Maharashtra India  
Tel.: (+91) 20 6768 2300 · Fax: (+91) 20 6768 2302 · india@hipra.com · www.hipra.com

# A New Revolutionary Animal Health Company Is Born

**POULTRY INDIA EXPO, HYD**

Please visit our stall at  
Stall No Y 26, 27 & 28, Hall No 5  
23-24-25 November 2022



## GLOCREST™

Pharmaceutical Pvt. Ltd

### Innovation For A Better Health

Revolutionizing Animal Nutrition Globally  
Through Innovation & Technology.

GLOCREST is combining decades of experience with unparalleled research capabilities. Helping you achieve optimal animal nutrition, feed quality, pathogen control, pharmaceutical solutions and more.



#### ABOUT US

Caring About Life, That is Our Core Business. GLOCREST is a global animal health venture of Krishna Group - prestigious poultry and agricultural conglomerate. Being an industry pioneer, GLOCREST & its peers, has more than half a century of combined expertise in the development and manufacturing of nutrition products. Our customers include everyone from small and large farmers, to integrations and dealers. We aim to provide them with nutritional solutions that ensure maximum animal health and performance.



**Vitomix**  
TABLETS

**TOXK/L**

**Chelomix**

**CocciCare**

**EnziProb**

**GLOPROMIN**

**GLOZOL Plus**

**GROXX**

**HepoCare**  
LIQUID PLUS

**Feedacid**

**GLOTONIC**

**GLOCREST™**  
Pharmaceutical Pvt. Ltd

Off.: 2018, Solus Hiranandani Business Park,  
Hiranandani Estate, Thane (W) - 400 607.  
Maharashtra, India.

www.glocrestpharma.com  
+91 22-46007565  
info@glocrestpharma.com



## Importance to improve first week body weight and Reduce Early chick mortality



**Dr. Mahesh Rajurkar**  
Product & Techno-  
Commercial Manager  
GLOCREST  
Pharmaceutical Pvt. Ltd.

“Well beginning is half done” – Same is true for early life of chicks. First 10 days body weight has spring board effect to perform at the best till the end. Similarly, first 10 days body weight is equally important in layers and broiler chicks. Because first 10 days is very stressful time for baby chicks due to various factors.

At the same, time controlling early chick mortality (ECM) is extremely challenging in spite of the best management practices. Winter season on its way. Here, the control in early chick mortality is herculean task. Therefore, GLOCREST has introduced a complete solution to take care of all the challenges through a nutritional management.

The commonest causes of mortality found in the first 10 days were the stress factors like transportation, vaccination, omphalitis, yolk sac infections and septicaemia, E. coli and Enterococcus spp. Also, mortality occurs in weak chicks also due to managemental



**Dr. Ramdas Kambale**  
CEO & Board Member  
GLOCREST  
Pharmaceutical Pvt. Ltd.

issues such as brooding temperature, access to feeder, drinker, space etc. Due to various such factors, ECM management and first 10 days body weight can be optimised with complete solution containing Vitamins/minerals/Probiotics/Prebiotics/Anti-Stress MSM, Protein hydrolysate, Beta Glucan etc to boost the performance of chicks and improve the immunity of baby chicks.



## Introduction of **GROX** GLOCREST Pharma:-

To overcome problem of early chick mortality, reduce stress in chicks and improve chicks body weight GLOCREST launched **GROX** which contains Vit. A D3 EC along with other vitamins, Electrolytes, Probiotics, ProteinHydrolysate, Methyl sulfonyl Methane, Beta glucan and Mos.

- **Methyl Sulfonyl Methane –MSM is typical anti-stress supplement which has** many biological advantages. Dietary MSM in livestock production, including for chickens, has been increasingly investigated as stress controlling factor by ravaging the free radicals (primarily responsible for oxidative stress). It also works as an antimicrobial, and immune modulator.
- **Vitamins: - Vitamins solution given through drinking water is directly available to chicks for normal body functions, growth, and reproduction**
- **Electrolyte and Vit C: -** While requirements for potassium, sodium, and chloride have been clearly defined, it is also important to maintain a balance of electrolytes in the body. Often termed electrolyte balance or acid-base balance, the effects of deficiency of any one element are often a consequence of alteration to this important balance as it affects osmoregulation. Vitamin C in poultry *plays a important role in growth, strength and immunity of poultry.*
- **MOS**—Mannan Oligo Saccharide is well known prebiotics and its functions especially during early stages, becomes extremely important to create the environment for beneficial microflora & predisposing factor for probiotics.

- **Probiotics** –Proper combination of probiotics like lactobacillus/Saccharomyces and Bacillus group, becomes extremely beneficial to give the best gut health. They work faster in presence of MOS.
- **β-glucan** may be used as a replacement for dietary antibiotics in animal feeds to improve defense mechanism and boost the immunity consequently reducing mortality and enhancing growth.
- **Protein Hydrolysate:** - Protein Hydrolysate is a functional protein especially formulated to **improve the performance of the birds.**

**Overall **GROX**** is like chick ORS- the complete solution to optimize performance of baby chicks in terms reducing early chick mortality and increase the body weight first 10 days.

However, GRO-X can be used any stress conditions whenever encountered.

### Usage: -

1g /Liter of drinking water for 7-10 days after arrival of chicks.

**Monitoring observations of chicks after use of **GROX** :- Based on various field trials, following results were anticipated.**

1. **Increased Body weight of chicks after 10 days around 10-20 g**
2. **Reduced Mortality in chicks by around 0.25-0.5%**
3. **General observations: -**

By using **GROX** chicks looked healthy/active & responsive and inclined towards the optimum performance at the end.

(Some information and images taken from internet).



## Jugalbandi (joint action) of Enzymes & Probiotics in feed digestion & gut health



**Dr. Mahesh Rajurkar**  
Product & Techno-Commercial Manager  
GLOCREST  
Pharmaceutical Pvt. Ltd.

Fact is, no one is comfortable to manage the feed cost and in such a scenario, the small and marginal farmers find it more difficult. In fact, everyone finds it difficult. Because of continuous fluctuation in market price of ready birds, eggs & feed ingredients, it becomes more challenging. Since

one cannot control raw material prices and the market price of our produce, it's extremely important to get utilized penny by penny whatever we use as feed and feed supplements.

Recently soiled eggs (dirty eggs) also becoming a common problem due to alternate raw material usage or other unknown factors.

Therefore, Jugalbandi of enzymes and probiotics become an integral part to utilize the feed and maintain healthy gut & subsequently reducing problem of dirty eggs up to some extent.

Proper blend of enzymes and unique strains of probiotics is the most required practice to improve performance and feed utilization, gut health, minimized environmental pollution.

Looking into those practical challenges of feed digestions and maintaining proper gut health, GLOCREST introduced tried & tested solution as

**EnziProb**

**EnziProb** It is perfect combination of multi enzymes and multi probiotics. It contains multi enzyme which

is a functional protein that stimulates or accelerates the rate of specific chemical reactions.

Enzymes in **EnziProb** are **Xylanase, Alpha amylase, cellulase, Protease, Mananase, Lipase, Phytase**. These are digestive enzymes

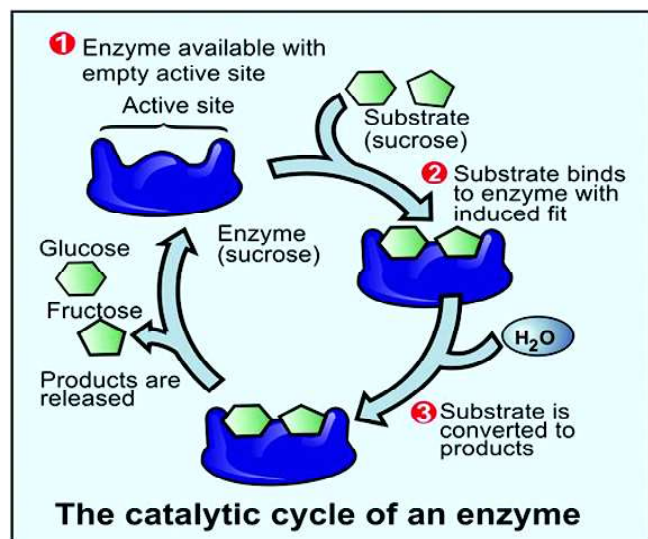
which are natural substances needed by body to help break down and digest feed ingredients.

Probiotics in **EnziProb** are **Lactobacillus acidophilus, Saccharomyces boulardii, Bacillus subtilis, Bacillus licheniformis, Bacillus megaterium, Bacillus polymyxa**. These are different type of bacteria used to improve digestion and restore normal flora.

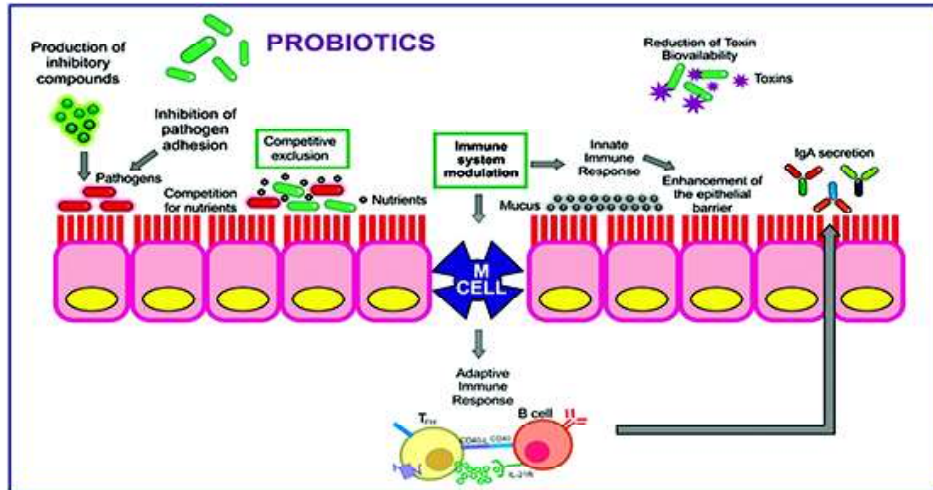


**Dr. Ramdas Kambale**  
CEO & Board Member  
GLOCREST  
Pharmaceutical Pvt. Ltd.

### Role of Enzymes



## Role of Probiotics



**EnziProb** During the transit of digesta in the duodenum, jejunum, and ileum, they remove fermentable substrates that could impact digestibility and impact gut microbial balance. During the caecal phase, degradation products of sugars etc.

Xylanase is becoming an extremely important enzyme as an individual one or in combination with other synergistic enzymes. Xylanase is often used **to improve cereal processing**.

The complex of cocktail enzymes like Xylanase, Alpha amylase, cellulase, Protease, Mananase,

Lipase, Phytase ensures best feed digestion from various feed ingredients being used in the diet.

Probiotics in **EnziProb** used as nutritional tools in poultry feed for **promotion of growth, modulation of intestinal microflora and pathogen inhibition, immunomodulation and promoting meat quality of poultry**.

**EnziProb** It seems to be more than just a gut feeling. Probiotics and enzymes have been proven to have a positive effect on the gut health of chickens & improved feed digestion.

(Some information and images taken from Internet).

*M.A. Waheed*



# S.S. Associates

## SHR PACKAGING



D.No.1-2-405, Gaganmahal, Domalguda, Hyderabad - 500029

Cell: 78931 40260



## Single-Stage Incubation to Produce Top Quality Chicks

It is true that good quality chicks can be achieved through both Multi-Stage & Single-Stage incubation. However, it is the difference between good quality chicks and TOP quality chick that single-stage incubation can produce.

The poultry industry is going through a great phase of rapid development in past two decades. Broiler chicks which use to take 48 days to achieve a weight of 2.0 Kg now it is achieved in less than 35 days. Genetics has played a major role in this drastic improvement in broiler performance, and it is a continuing process. It will be no surprise that in the next few years this growing time can be reduced to 28 days or even less. Additionally, with a dramatic reduction in grow-out time, broilers can gain that weight with far better feed utilization than ever before. With this great genetic improvement, the needs of the embryo during development are also under great pressure and need to improve to provide the precise environment to fulfill this requirement. With the use of multi-stage incubation systems, we have been achieving good quality results for many years, however, with these high yielding breeds we must use convert to single-stage systems to achieve their genetic potential. Single-stage incubation provides consistent and precise requirements to the embryo for each stage embryonic development.

Single-stage machines can be profiled to maintain precise conditions for the developing embryo, by doing this we can use the maximum efficiency of the incubators to produce the highest number of top-quality chicks. This increase in hatch is due to a decrease in early and late embryonic mortality during incubation, while results after placement on the farms shows decreased 1<sup>st</sup> week mortality as well. Because of good start the embryos get, the resulting chicks perform better throughout the grow out cycle.

Embryonic development is usually divided into three stages, endothermic, neutral, and exothermic

stages. During the endothermic stage, the incubator needs added heat to developing embryos; the neutral stage means that the incubator doesn't need to add much heat or cooling to maintain the ideal temperature, while during the exothermic stage the embryo generates a lot of heat energy which needs to be removed to provide the desired stagewise climate for developing embryo. With multi-stage machines it is not possible to provide the precise climate for the embryos stage of development, however, this is very well possible with single-stage machines. Incubation profiles are specifically developed to achieve this with changes at numerous ages of development during incubation. In single-stage machines, while all eggs are loaded at the same time, the question comes up if all eggs must be of same age flock? Some manufacturers say it is mandatory but with our technology we can set eggs from mix aged flock with maximum variation of 12 weeks of flock age and still produce the top-quality chicks.

In single-stage machines, all embryos develop at same time with a precise climate, therefore, all organs of the chicks are developed orderly and properly which results in the best chick's performance possible. After loading eggs, the machines are completely sealed for the first 9-10 days and during this development phase, we can maintain the desired CO<sub>2</sub> level for better development of embryo. This is unique feature of single-stage and JCMI machines that can achieve this as the machine cabinets are perfectly airtight. This gives perfect climate to the embryo as well as saving and conserving energy. With this better development of the embryo, the day-old chick (DOC) weight is also greater, which results in growing more meat at the end of grow out cycle in same amount of feed, time, and efforts. This gives a great amount of savings and returns on the investment of the total project. When someone does their own processing or integration, they will

reap these benefits. In this way, return on investment is not more than three years after the initial startup.

Being that embryos are high yielding; it is believed that they are more sensitive and susceptible to stressors. Additionally, single-stage incubators, in comparison with multi-stage incubators, provide a better opportunity to sanitize completely after every incubation cycle. Whereas multi-stage operations are a continuous process and there is no possibility to do this kind of sanitization as the incubators are rarely empty. In today's world, the need for thorough sanitation is becoming the new biosecurity norm, to reduce the disease load in hatchery and make hatchery operations more efficient. Another advantage for using single-stage systems other than maintaining better biosecurity, is the labor saving these machines can offer. When

loading of eggs, it can be done more efficiently as this can be accomplished with availability of manpower as you can start incubation at your decided time of hatch and not only be the time of placing in the incubator.

Therefore, presently, single-stage incubation offers many more benefits as compared to multi-stage with the benefits undoubtedly increasing long term with the overall improvements in the efficiency of operations.

**Pradeep G Kolte**  
Sales Manager Asia

**Jamesway Chickmaster Incubator**  
+919423005159  
Pradeep.kolte@jcmincubator.com  
www.jcmincubator.com



**Time to Time More, Healthy & Premium Quality Chicks**



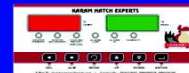
**INSIDE SERIES**



**OUTSIDE SERIES**



**Digital Series**



**KARAMSAR POULTRY EQUIPMENTS™**

OFFICE : K-139, POCKET-K, SECTOR-5, DSIIDC INDUSTRIAL COMPLEX BAWANA, NEW DELHI-110039

email : karamsarpoultryequipments@gmail.com \* tarankaramsar@gmail.com

Website : www.karamsar.in karamsarequipments.com



9910310001, 9999226259, 8888800076, 9910423173



INCUBATOR (CHICKMAN SERIES)



INCUBATOR (EGG HATCH SERIES)



DEBEAKER



VACCINATOR



PLASTIC EGG SETTING TRAY



PLASTIC EGG HATCHER BASKET



DOUBLE WAFER CAPSULE

**WE HAVE NO BRANCH**



# World Egg Day Celebrations at Hyderabad



“Pregnant women in Telangana would be supplied Eggs through Anganwadis” Mrs. Sathyavathi Rathod, Minister for Women and Social Welfare of Telangana has promised to take to the notice of the Chief Minister Mr. Kalvakuntla Chandra sekhar Rao to sanction daily one or two eggs to the pregnant women through Primary Health Centers in Telangana State. Addressing the gathering of Women and Children in the premises of Babu Jagjeevan Ram Hall, Kothapeta, Hyderabad, has said that the Telangana Government has been supporting the women through several schemes and serving eggs to Balwadis and Anganwadis through Midday meals Scheme. She was the Chief Guest for the World Egg Day Celebrations organised jointly by National Egg Coordination Committee, and, Indian Poultry Equipment Manufacturers Association (IPEMA). The then Woman Secretary Mrs. Chaya Rathan succeeded in convincing the higher authorities in issuing the GO on 25.9.2009 and eggs were introduced for the first time in Anganwadis.

Mr. Neelakhanti Durga Prasad, a Chartered Accountant by profession and Egg Diet Specialist by Practice



explained how he could control his weight and diabetes with 10 Eggs a day. He was attacked with Sugar in his 40s. Doctors advised him diabetic diet of 500 calories a day. He said, he got puzzled with the suggestion while his requirement was 2000 calories a day like other human being. As an auditor in Super Specialties Hospitals, he got some experience with the functioning of hospitals with all unscrupulous sources of income and did not believe them with the routine treatment system. He explained the gathering how he has overcome the menace of sugar. He also explained how sugar causes B.P., extra weight, joints problems, hair loss, cancer etc. Sugar causes in the body due to carbohydrates in the food. He said in general ladies require 1500



calories a day and men require 2000 calories. He said that 80% of visitors are women and he has advised them to take more eggs which will reduce the weight and overcome from the sugar. Being vegetarian, initially he used to take one egg per day and subsequently increased to 12 eggs per day and advised the sugar patients to follow suit as he has overcome from the sugar menace.

Mr. Durga Prasad reported that egg diet hides the age. He said that he is 50 years old and appears to be 40 only. Further he said that taking 6 to 12 eggs per day will arrest the heart problems. The Multispecialty Hospitals mislead the patients and mint money unscrupulous way as Diagnostic Centers finance the Doctors to encourage using the medicines he said. In general he said that Doctors advise the patients not to eat yellow yolk in eggs which is totally incorrect. One should eat eggs with



yellow yolk he said. To keep away from such traps, he advised the sugar patients to take at least 6 eggs per day apart from taking some fruits to keep them fit. Further he said that being an auditor he came to know about misleading the patients in a bid to sell their medicines and mint money unscrupulous way. Taking regularly the boiled eggs, he said it cures obesity, heart diseases, joint pains, kidney problem and even cancer.

Mrs. Satyavathi Rathod said that the World Egg Day celebrations will not only create awareness of consuming eggs but at the same time will help the poultry farmers to produce more eggs. She said that no other State Govts. have schemes for the welfare of children and women. She said that the State Govt. of Telangana have schemes like Arogya Lakshmi to monitor the health of the women during her pregnancy to delivery period and under Kalyana Lakshmi, women are being presented with Rs. One lakh cash during their marriage time.

Mrs. Satyavathi Rathod said that during the Covid period the women and children were provided with ration and also 30 eggs per month and 25 lakh people benefitted through 37,200 Anganwadis. 30 lakh eggs were distributed every day through 332 Ashram Schools and around 1,000 Gurukulams. The



Contract of supplying the eggs were also given to small poultry farmers approved by NECC and its declared rates. As biggest consumers of eggs, she said that the state government worries whenever they find small eggs or rotten eggs in the supplies. As the schemes are meant for poor people and the scheme is also beneficial to Poultry farmers, she appealed the farmers to supply fresh and healthy eggs keeping in mind of the health of the people.

She appreciated the efforts of organizers in conducting the "World Egg Day" celebrations in an impressive manner.

Mr. Potluri Chakradhara Rao, the President of IPEMA appealed the gathering to understand the effort of a poultry farmer in producing the eggs and making it available at an affordable price of Rs. 4 to 5 in India and whereas in countries like US the egg is costing not below Rs.20/- he said. He described the



egg as health capsule available at a cheaper rate that a common man can also afford.

Dr. Venugopal Rao, the Asst. Director of Animal Husbandry in his brief message explained the value of eggs. He recollected that during the Covid period, those who had consumed enough eggs could able to sustain from the Pandemic.

Mr. D. Sudhakar, Coordinator, National Egg Coordination Committee, Southern Zone, Dr. Ezil Kumar, Chief Operating Officer, National Egg Coordination Committee, Mr. D.S. Subramaniam, Managing Director, Tara Group and Vice President of Poultry Federation of India, Southern Zone, Mr. Rajasekhara Reddy President, Mr. J. Sanjeeva Reddy, President, Hyderabad Layer Farmers Association, Mr. J. Ravinder Reddy, Nithisha Poultry Farms, Gandichervu, were also participated actively in the celebrations.



# ProAct 360™

A complete perspective. Perfected for Progress.

What if a new perspective on protease could change your poultry business for the better?

## High Nutritional & Health Performance

Improving protein digestibility and gastrointestinal integrity



## Sustainable Business contribution

Improved performance for lower environmental impact and better animal welfare



## New Commercial models

Affordable inclusion costs and improved ROI



## End-to-end digital services

For maximum convenience and peace of mind through better decision making



A product that goes beyond the parameters of protease, ProAct 360™ provides a complete solution with the potential to grow your business further. Proven to increase protein digestibility and gastrointestinal integrity in broilers, ProAct 360™ promotes better animal health and supports more sustainable production. A catalyst for positive change, this results in reduced feed costs and increased return on investment. For longer term planning, we provide interconnected digital services that allow you to reach your targets by supporting better decision-making.

A 360 degree perspective like never before. ProAct 360™ is the new market-standard in Feed Protease Technology.

Discover all product benefits online or speak to your DSM Sales Representative.

*If not us, who? If not now, when?*  
**WE MAKE IT POSSIBLE**

## ANIMAL NUTRITION AND HEALTH

ESSENTIAL PRODUCTS

PERFORMANCE SOLUTIONS + BIOMIN®

PRECISION SERVICES





**Bhuvana**  
NutriBio Sciences

ISO, GMP & HACCP Certified Company

***Bhuvana's Mission Statement :***  
***Science Should Convert***  
***To Applied Science***  
***With Commercial Viability***  
***& Poultry Producers First***

**Solutions through Water**

***Beatz-Se Powder***

*Power to birds*

*India's Most Trusted  
Immunomodulator (Vit.E+Se+Others)*

***BPower GLH***

*Next Gen Performance Booster*

*Multifunctional Multitonic Unique  
Formulation for Growth & Defence*

**BhuTox**

Complete Solution for Toxins & Moulds

**OreMix LB**

Scientific, Rich & Economical formulation  
of Organic & Inorganic Trace Minerals


**Solutions through Feed**

**Bhuvana NutriBio Sciences**

E.7, 2nd Floor, Above Mahavir Motors, Opp. Gate No.1,  
Market Yard, Gultekadi, Pune. 411037, India.

 bhuvanaseservices@gmail.com

 services@bhuvanans.com

 9850979652 | 9396686500



**www.bhuvanans.com**



# Micromix<sup>®</sup> 3B Dry

The Thermostable Probiotic Consortium – a Sustainable Gut Health Integration Programme



## Benefits

- Improves microbial balance of the gastrointestinal tract
- Inhibits growth of invading pathogenic microorganisms
- Potentiates local and systemic immune response mechanism



**FAMI**qs

Bentoli Inc.,  
Elgin, Texas, USA  
India Customer Care: +91 7397785002  
Email: [askthefeeddoctor@bentoli.com](mailto:askthefeeddoctor@bentoli.com)  
[www.bentoli.com](http://www.bentoli.com)

Visit us at: [in](#) [twitter](#) [f](#)

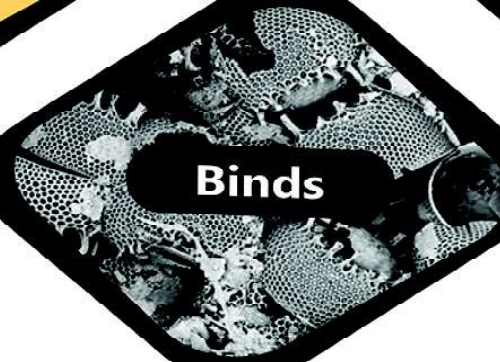
**Detoxifies**



**Protects**



**Binds**



Contamination of feed  
with mycotoxins is  
one of the biggest  
safety concern in  
livestock farming

**NILTOX**<sup>®</sup>

A complete solution for mycotoxins



## Field Officials' Family Get Together of Tara Group



The largest Veterinary Pharmaceutical Distribution Company in India - Tara Group had their Telangana Field Officials' Family Get Together on Sunday, the 16th October 2022 at Novotel Hotel, Hyderabad Airport, Hyderabad. The event started sharp at 10.30 am with Ganesh Vandana and Lamp Lighting by Mr. D. S. Subramaniam's Family members including his mother, his wife, his uncle and aunts. The welcome address to the august gathering by Mr. D. S. Subramaniam was crisp and short. He explained 27 years of his Tara Group's journey with many ups and downs continuing till date and also his 42 years long journey in Animal Health Sector of India. His golden statement was **"After having completed 42 years of service in animal health industry, I am still not tired"**. Other prominent and distinguished speakers were Mr. T. Natesan,



Managing Director, Virbac India, Dr. V. K. Shankar, CEO, Globion, Dr. Ashok Kumar Commercial Manager, South East Asia and South Asia, Idexx Labs, Dr. Pankaj Lohan, Vice President, Vvaan, Mr. Sudhir Kumar Malhotra, Managing Director, Interface, Mr. Sharath Babu, Additional Commissioner of Police (Retired), Hyderabad, Mr. Davinder Singh Dhanjal (Dolly) - Mr. Subramaniam's college mate from Ladakh, Mr. Surender Nagpal - Mr. Subramaniam's classmate from Delhi.

Mr. T. Natesan, Managing Director, Virbac in his speech clearly mentioned as to how he was inspired by Mr Subramaniam in the year 1988 while working in the field in Namakkal area. Mr Subramaniam was the Area Manager those days





for Glaxo Animal Health for the states of Tamil Nadu and Kerala. Mr Natesan, those days used to work as a Poultry Feed Representative for Deejay Feeds at Namakkal. One day in the year 1988 when Mr Natesan coincidentally saw Mr Subramaniam and his local Namakkal colleague at a stockist's place, he, then and there itself decided that he will make his career with a Pharmaceutical Company and that is how he joined Glaxo's Poultry Feed and then at a later date got into Glaxo's Veterinary Pharmaceuticals and finally today he is the Managing Director of Virbac India Ltd. (the then Glaxo). Mr T Natesan before taking over as the Managing Director of Virbac was working in various capacities in South East Asia, Taiwan and Korea with Virbac for almost nine and half years.

Dr .V. K .Shankar, CEO, Globion India Pvt. Ltd. (a 100% subsidiary of Suguna Holdings Pvt Ltd.) in his address specifically touched hard work and integrity of Field Officials. He emphasized that all the field officials with their sheer hard work and



integrity will be definitely successful in life. He explained all the attendees about his tenure with big multinationals like Pfizer , Bayer etc . Also, he discussed his Bayer, Germany tenure with regard to his launching Novel immunostimulants for chicken and beef cattle for US market and how he led the registration for clinical trials in various markets across the globe specially in Asia, Latin America, South Africa and Sub Saharan Africa.

Dr .V. Ashok Kumar , Regional Commercial Manager , South East Asia and South Asia , Idexx Laboratoies Pvt. Ltd. explained as to how he used to work in deep interior Districts of Telangana on scooters while he was medical representative of Sarabhai Chemicals. He clearly said that there is no substitute for field work. He remembered having met Mr Subramaniam many times as a representative in early 1980s in Telangana Districts. He said that he knows Mr.Subramaniam for 40 years now. He also gave lot of emphasis on field work and integrity. All the Field officials were present







in the event from morning till evening along with their wives and children.

The gist of most of the speakers was that the erstwhile representatives of respective companies had better growth prospects leading them into managerial positions. This was due to their honesty, sincerity, hard work and dedication towards their profession. However, they expressed their pain and agony towards today's scenario that the present some of them are running parallel business in the names of their relatives which is very harmful to Veterinary Industry. They have hence advised to curb such practices and stay loyal to their companies and grow within respectfully.

It was a nonstop entertainment for more than 12 hours including classical dances, Tambola Games, Magic Shows, Virtual Games, Mehendi, Bangles for ladies, lot of songs (film songs) and dances by children, ladies and one and all. The special

attraction was the photo booth wherein every family was given two photo frames, one for the wife and husband and the other one for their family members. Every family carried these photo frames back to their homes. All the attendees carried back with many gifts. In the evening it was an excellent cocktail and dinner with a musical event for the male members and every one enjoyed the party with total satisfaction. Finally, this wonderful event was ended with gaiety and it was like a big Diwali Carnival and the entire credit goes to Mr D.S.Subramaniam and his five members team namely Vasantha Lakshmi, Vijaya Durga, Chandrasekhar, Nagesh and Suresh Kumar.

To conclude, Tezasvi Publications appreciate Mr D S Subramaniam for his fond love and respect towards the Press and it is no exaggeration to say that none in the entire Southern Region follow the suit.













# Artificial Insemination in Poultry

S. K. Joshi<sup>1</sup>, S. Sathapathy<sup>2</sup>, P. K. Rath<sup>3\*</sup>, B. P. Mishra<sup>4</sup> and S. S. Biswal<sup>5</sup>

<sup>1</sup>Department of Livestock Production and Management, CVSc. & A.H., OUAT, Bhubaneswar-751003, Odisha

<sup>2</sup>Department of Anatomy and Histology, CVSc. & A.H., OUAT, Bhubaneswar-751003, Odisha

<sup>3</sup>Department of Veterinary Pathology, CVSc. & A.H., OUAT, Bhubaneswar-751003, Odisha

<sup>4</sup>Department of Livestock Products Technology, CVSc. & A.H., OUAT, Bhubaneswar-751003, Odisha

<sup>5</sup>Department of ARGO, CVSc. & A.H., OUAT, Bhubaneswar-751003, Odisha

\*Corresponding email ID: drprkrath78@gmail.com

## Introduction

Successful commodity production must continually blend efficiencies and economic value derived from scientific disciplines such as nutrition, genetics, disease control, and reproduction to produce a final product at lowest cost. To date, the poultry industry stands as a model for other commodities in its mastery of nutrition, genetics and disease control for their production of meat and eggs. The poultry industry can gain great advantages by exploiting unique features of avian reproduction. Artificial insemination (AI) has not been eligibly exploited in poultry industry due to the sensitivity of avian spermatozoa to freezing and thawing process. Therefore, fresh liquid avian semen is conventionally used for AI. Strategic use of artificial insemination (AI) provides the necessary management tool and requires careful analysis of: (a) where within the breeding/production scheme of the industry AI should be used: and (b) selection of a mode of AI matched to elements of that scheme. Artificial insemination (AI) is widely used to overcome low fertility in turkeys, which results from unsuccessful mating as a consequence of large, heavily muscled birds or of reduced libido. AI has not found wide application in commercial chicken production, but is routinely used in special breeding work and research. AI allows separation of the emission of semen from the male from deposition of semen in the female. This impacts reproduction in two ways: (a) distribution of that semen to an optimum number of females: and (b) delaying deposition of semen to a time matching other management objectives.

## Semen Collection

Collecting semen from a chicken or turkey is done by stimulating the copulatory organ to protrude by massaging the abdomen and the back over the testes. This is followed quickly by pushing the tail forward with one hand and at the same time, using the thumb and forefinger of the same hand to “milk” semen from the ducts of this organ. Semen flow response is quicker and easier to stimulate in chickens than in turkeys. The semen may be collected with an aspirator (turkeys) or in a small tube or any cup-like container. In turkeys, the volume averages <“0.35–0.5 mL, with a spermatozoon concentration of 6 to >8 billion/ mL. In chickens, volume is 1–2 times that of turkeys, but the concentration is about one-half. Collected semen is usually pooled and diluted with an extender prior to use.

## Storage of Poultry Semen

Chicken and turkey semen begins to lose fertilizing ability when stored >1 hr. Liquid cold (4°C) storage of turkey and chicken semen can be used to transport semen and maintain spermatozoal viability for <“6–12 hr. This short-term storage of semen is common in turkeys, while not as common in chickens. When using liquid cold storage for >1 hr, turkey semen must be diluted with a semen extender at least 1:1 and then agitated slowly (150 rpm) to facilitate oxygenation. Chicken semen should be diluted and then cooled, but agitation is not necessary. Chicken and turkey semen may be frozen, but reduced fertility limits usage to special breeding projects. Under experimental conditions,



fertility levels of 90% have been obtained in hens inseminated at 3-day intervals with 400–500 million frozen-thawed chicken spermatozoa.

Several commercial semen extenders are available and are routinely used, particularly for turkeys. Extenders enable more precise control over inseminating dose and facilitate filling of tubes. Dilution should result in an insemination dose containing <“300 million viable spermatozoa for turkeys. However, the number of spermatozoa inseminated will range from 150–300 million viable cells depending on the age of the turkey hens inseminated. In chickens, the number of diluted semen inseminated will range from ~100–200 million sperm cells. Producers will usually determine the spermatozoa concentration and dilute the semen to obtain the appropriate sperm cell concentration for either the turkey or chicken.

#### Procedure of A.I in Poultry

The pressure is applied to the left side of the abdomen around the vent for the process of insemination, which causes the cloacae to Evert and the oviduct to protrude. It allows syringe or plastic straw to be inserted <“1 in. (2.5 cm) into the oviduct to deliver appropriate amount of semen. As the semen is expelled by the inseminator,

pressure around the vent is released, which assists the hen in retaining sperm in the vagina or oviduct. While inseminating undiluted turkey semen, the high sperm cell concentration allows for 0.025 mL (<“2 billion spermatozoa) to be inseminated at regular intervals of 10–14 days, yielding optimal fertility. In chickens, due to the lower spermatozoon concentration and shorter duration of fertility, 0.05 mL of undiluted pooled semen is required at intervals of 7 days. The hen’s squatting behaviour indicates receptivity and the time for the first insemination. For maximal fertility, inseminations may be started before the initial ovi position in turkeys, while this is not necessary in chickens. Fertility tends to decrease later in the season. So, it may be justified to inseminate more frequently or use more cells per insemination dose as hens age.

#### Precautions adopted during A.I in Poultry

1. Males must not be running with other birds at the time of A.I.
2. When catching the male for A. I. it is important that he is not “chased” around the pen or cage.
3. The processes of A.I should be executed as soon as the male is caught.
4. The male one should be tried later or on next day, if he fails to give the semen.

#### Semen volume and Sperm concentration in different species of Poultry

Species	Volume (ml)	Sperm concentration (million per ml)	Need of sperm concentration per insemination (million)
Broiler type chicken	0.7	3500	150 – 200
Layer type chicken	0.5	4000	150 – 200
Tom	0.25	9000	300
Gander	0.6	2500	250
Drake	0.3	4000	300

### Characterization of poultry semen for A.I

The semen quality in poultry depends upon certain factors such as morphology, semen volume, colour, sperm concentration and motility.

Semen appearance	Semen quality
Pearly white	High sperm density
Greyish watery	Low density of sperm
Yellowish	Very low density of sperm
Brownish/ Bluff	Contaminated with faeces

### Advantages of A.I in Poultry

- Increased mating ratio
- Use of older males from outstanding performers
- Able to use an injured bird
- Elimination of preferential mating can be done
- Laying cages can be used
- Successful cross breeding can be practised
- Disparity in the sizes can be avoided

### Disadvantages

- Trained personnel are required
- Chances of genetic inferiority, abnormality and disease transmission

### Recent advances in AI Technology

- Performing the initial insemination just prior to rather than after the one set of egg production
- Aeration of semen during storage
- Insemination dose based on number viable sperm rather than semen volume
- Recent technological developments in the production of germline chimeras allow the recall of poultry genetic resources, provided that the primordial germ cells (PGCs) have been collected and cryopreserved beforehand.

### Conclusion

- AI is a common practice in poultry industry almost exclusively for production of hatching eggs.
- With advent of AI; there would be greater selection pressure on the male traits of economic importance and subsequently greater genetic advancement per generation.
- The most valuable aspect of management is control of time as this is the critical resource of any operation.



**Mohd. Tareq Irfan**  
Mob. No. +91 950 5659670  
+91 738 6503377  
Tel : 040-64555376

**ATA Packing Products**  
**ATA Imports & Exports**

Works : Survey No. 283/1, Anupuram, Jedimetla, Phase III, Hyderabad - 500 004.  
Business Center : First Floor, Siraj Residency, 36-1 Defence Colony, Sainikpuri, Sec'bad - 094.

Email: [atapackingproducts@gmail.com](mailto:atapackingproducts@gmail.com), [ataimportsexports@gmail.com](mailto:ataimportsexports@gmail.com)



Great Place To Work®

Certified  
SEPT 2022 - SEPT 2023  
INDIA

Srinivasa



Hy-Line®

International Bird Now Customized for INDIA

W-80i

- Local Breeding Program
- Maximum Livability
- Maximum No. of Saleable Eggs
- Lowest Feed Per Egg

### Latest Performances

**Srinivasa Hy-Line W80i Performance in Karumannan Poultry Farm, Namakkal, Tamil Nadu**

**Mr. Karumannan**

**Flock Age 41 Weeks** (Still Continuing)

**Peak Production 91.42%**

**Weeks Above 90% 12 Weeks** (Still Continuing)

**Hen House Eggs 127.00**

**Cumulative Feed per Egg 114.77 g**

**Feed Per Day (Laying Period) 94.65 g**

**% achievement of standard H.H Eggs 92.00%**

**Feed Cost Per Egg upto 41 Weeks Age considering Rs. 26/KG Rs 2.98**

[www.srinivasa.co](http://www.srinivasa.co)

**Srinivasa Hy-Line W80i Performance in Menachi Poultry Farm, Namakkal, Tamil Nadu**

**Mr. JM.Ravi**

**Flock Age 32 Weeks** (Still Continuing)

**Peak Production 93.11%**

**Weeks Above 90% 7 Weeks** (Still Continuing)

**Hen House Eggs 74.09**

**Cumulative Feed per Egg 120.07 g**

**Feed Per Day (Laying Period) 97.76 g**

**% achievement of standard H.H Eggs 96.04%**

**Feed Cost Per Egg upto 32 Weeks Age considering Rs. 26/KG Rs 3.20**

[www.srinivasa.co](http://www.srinivasa.co)

Srinivasa Farms™

Srinivasa Farms Private Limited

(CIN : U01222TG1983PTC003979)

Registered Office : Plot No. 82, Kavuri Hills, Phase II, Madhapur, Hyderabad - 500081, Telangana, India.

E-mail : [contact@srinivasa.co](mailto:contact@srinivasa.co)

Phone : +91 40 23633500 / 501, +91 91000 21340

[www.srinivasa.co](http://www.srinivasa.co) | Follow us on





*Precession in  
Technology,  
Efficiency in  
Results*

Concentrated Mix of  
**essential oils**

FROM ITALY

**MixOil®**

*...part of your success*

**Effective  
Substitute of grow  
promoting antibiotics  
and Strengthens  
immune system for  
Poultry (Proven in India  
since 2014)**

**Available in India**

**MixOil Powder :** Micro encapsulated special technology slow and gradual release components.

**MixOil Liquid :** For fast results in acute conditions in water.

**For Details Contact:** South Asia Region  
**Ramddas N,**  
Cell : 9848413213  
nramdas@hotmail.com



[info@awpint.com](mailto:info@awpint.com)

[www.awpint.com](http://www.awpint.com)

A.W.P. srl - via IV Novembre, 23  
41051 Castelnuovo Rangone (MO) Italy





# ANIMUNIN

To keep respiratory tract clean and optimally functional



Unique combination of essential oil and phyto-constituents

## USAGE REGIMEN

Animunin Powder : 750g - 1 kg per ton of feed.

Animunin Liquid

Broilers	Layers	Quantity (For 100 Birds/day)
0-2 Weeks	0-8 Weeks	10 ml
3-4 Weeks	9-20 Weeks	20 ml
5-6 Weeks	21-72 Weeks	40 ml

- ▶ To be given regularly in broilers, layer-chicks and growers.
- ▶ In layers to be given regularly or 15 days every month, as required.
- ▶ Double quantity is recommended for breeders & during challenging conditions (for first 10 days).

## ANIMUNIN POWDER

A natural alternate to conventional antibiotic (Tiamulin, Tylosin, CTC) for prevention of respiratory diseases

## ANIMUNIN LIQUID

As an adjuvant alongwith conventional antibiotics for treatment of CRD/ respiratory infections

## PRESENTATION

Powder : 10 kg & 25 kg  
Liquid : 1 Ltr & 5 Ltr



FOR PREVENTION & MANAGEMENT OF RESPIRATORY BACTERIAL, VIRAL AND MYCOPLASMAL OUTBREAKS IN POULTRY

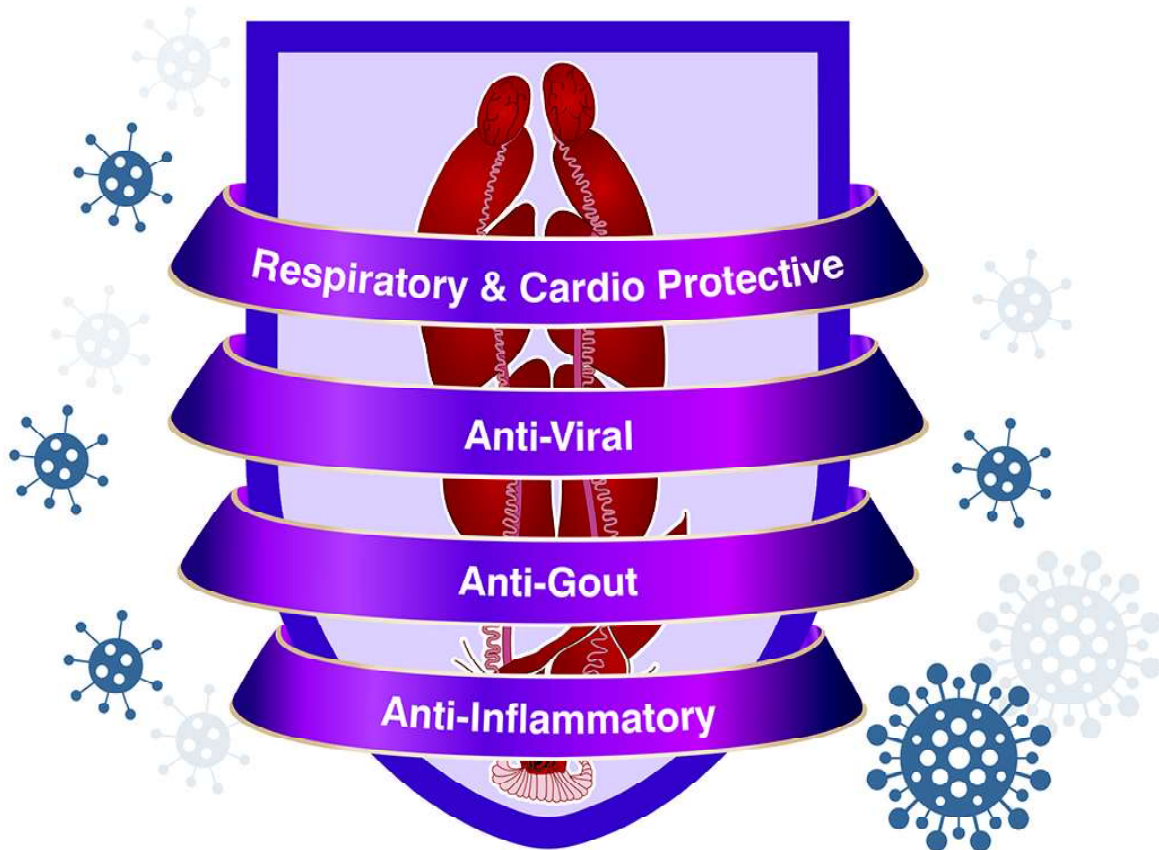
## INDIAN HERBS SPECIALITIES Pvt. Ltd.

C-215, 2nd Floor, Elante Offices, Plot No. 178-178A, Industrial & Business Park, Phase - 1  
CHANDIGARH (U.T.) - 160002, Ph. No. 0172 - 5011470, 4181014, +91 9023247217  
E-mail : ihspl@indianherbs.org, Website: www.indianherbs.org



# Nephrona<sup>®</sup>-U

The Upper Crest Nephroprotective



we are there when you need the most

## Next Level Nephroprotective

*Regenerating solutions for your changing needs...*

**Regen Biocorps AHI (P) Ltd.**

3rd Floor, D&E 301, Ananta Trendz, Near Narayan Garden Society  
Gotri, Vadodara - 390 021. Gujarat (India)

Website: [www.regenbiocorps.com](http://www.regenbiocorps.com)

An ISO 9001 : 2008 Certified Co.



# Immon & CRDX-IR

Protect your Birds from  
Respiratory Viral Infection and Immunosuppression



## Immon

A multi-nutrient formula to improve Innate and Adaptive Immunity even during diseases.

## CRDX-IR

A dual acting respiratory stress reliever works at very low dose.

To know more about Total Prevention Program. Write to: [query@regenbiocorps.com](mailto:query@regenbiocorps.com)



*Regenerating solutions for your changing needs...*

**Regen Biocorps AHI (P) Ltd.**

3rd Floor, D&E 301, Ananta Trendz, Near Narayan Garden  
Gotri, Vadodara – 390 021. Gujarat (India)

Website: [www.regenbiocorps.com](http://www.regenbiocorps.com)

An ISO 9001 : 2008 Certified Co.

We are there when you need the most



## 55<sup>th</sup> AGM & 63<sup>rd</sup> National Symposium 2022

# “Changing Dynamics of Animal Agriculture in India”

**Date:** 30<sup>th</sup> September & 01<sup>st</sup> October, 2022 **Venue:** Hotel The Leela Mumbai, Andheri - Kurla Road, Near Mumbai International Airport, Andheri East, Mumbai

## Navigating to the future of animal agriculture in India - highlights of CLFMA's 63<sup>rd</sup> National Symposium 2022



The Compound Livestock Feed Manufacturers Association of India (CLFMA) conducted its 55<sup>th</sup> Annual General meeting and 63<sup>rd</sup> national symposium in Mumbai on September 30 and October 1 at Hotel Leela, Mumbai. The theme of the event was ‘**Changing Dynamics of Indian Animal Agriculture**’ which aimed to capture and assess industry trends, identify key challenges and plan the future for the sector.

Over 450 participants representing all stakeholders in the animal value chain - academicians, feed manufacturers, aqua farmers, animal health and nutrition experts - attended the forum.

Welcoming dignitaries, speakers and members, **Suresh Deora, Convenor & Secretary, CLFMA**, said, “I would like to extend a warm welcome to our chief guest Shri Purshottam Rupala to the inaugural of our 63<sup>rd</sup> symposium. He has been a





guiding force for welfare schemes for the betterment of farmers across India. I welcome Shri Jatindra Nath Swain who has been spearheading the Blue Revolution project, a central government scheme to help aqua farmers in the country; and Balram Singh Yadav of Godrej Agrovet - a veteran of the industry. I would also like to welcome Shri Tarun Shridhar, Former Secretary AHD, a great supporter of the animal industry.”

Introducing the session, **Neeraj Kumar Srivastava, Chairman, CLFMA**, said, “Change is the only constant. India’s livestock industry is undergoing a transformation, in tandem with positive macroeconomic and demographic trends. Our current focus is the adoption of modern solutions to overcome existing and upcoming challenges. We appreciate the government’s approachability, which is allowing for faster growth of the industry.”

“India is heading down a new path to success and we are glad to be collaborating closely with the industry. The government will take cognizance of

all innovations highlighted by technical experts. The achievements of this industry are building up the nation,” said **Parshottam Rupala, Minister of Fisheries, Animal Husbandry and Dairying (AHD) department, Govt. of India**, in his address as the Chief Guest at the Symposium.

He recommended implementing waste-to-wealth strategies for the disposal of dead animals. He added that the government is considering PPP (public-private-partnership) models for animal health in alignment with India’s One Health vision.

This was followed by the CLFMA Award Ceremony. The Famous CLFMA awards were given to two leaders, who had diligently worked and contributed to the development of the livestock sector. The Life Time Achievement awards were presented to Er. Anand Menon, FIE, who had contributed a lot to the livestock sector, during his glorious forty years of service as CGM, KSEL, Kerala & CLFMA Award was presented to Dr. Rudra Nath Chatterjee, Director ICAR-Directorate of Poultry Research,





Hyderabad for their marvelous contribution to the Indian Livestock Sector. CLFMA Chairman congratulated all the CLFMA award winners.

**Balram Singh Yadav, Managing Director of Godrej Agrovet**, presented the journey of the industry, highlighting data on growth in production and efficiency over the last two decades. He shared the optimism of the industry, reflected in a CAGR of 7.5% this year. “The next decade is going to be explosive. Investments in animal husbandry will outstrip any industry. Our contribution to agriculture GDP will grow from 37% to 50% in the next 5-6 years,” he said.

**Jatindra Nath Swain (SecretaryFy.)** said consumer demand is shifting to animal proteins, with a projected 4x rise in consumption by 2047. He urged the participants to adopt sustainable solutions to water and electricity consumption.

An industry survey report was also released on the occasion, followed by a vote of thanks by **Divya Kumar Gulati, Deputy Chairman, CLFMA of India.**



Cultural Event and Networking Dinner was enjoyed by all participants.

Day two of the Symposium began with the Welcome Address by Mr. Neeraj Kumar Srivastava, Chairman, CLFMA OF INDIA. The first session brought up technology solutions with a focus on data and analytics. “Mitigating the challenges of price escalations of feed ingredients” was moderated by **Amit Saraogi, Managing Director of Sarawagi Agrovet.** “Our industry has seen unprecedented price hikes for crops like soybean and corn. There is a strong need for unbiased and robust data to prevent unfavourable situations from repeating.”

**RMSI Cropalytics’ Kumarjit Mazumder** shared a glimpse of the methodologies of their digital crop map tool. It uses satellite images to capture plots of standing crops. A price outlook on relevant commodities like soymeal, mustard cake, cottonseed oil cake, bajra and maize was revealed by **Prerana Desai, head of research at Samunnati Agri.** She shared observations on the







impact of feed substitution, margin pressures and global macroeconomic trends. **Kevin M Roepke from USSEC** talked about 'Chickenomics' with a comparison of India and Sri Lanka. He brought out the increase in USA crush capacity driven by the adoption of renewable fuel policies. **Hemant Bansal of Patanjali Foods**, representing the Indian Vegetable Oil Producers Association, maintained that prices of crop feed need to be at a reasonable range to guarantee the sustainability of the ecosystem.

Building customer experiences, adopting innovation in branding and hyper-localizing for the domestic market were key call-outs from industry leaders participating in a panel discussion on go-to-market strategies for the livestock industry. The session was moderated by **Balram Singh Yadav, Managing Director of Godrej Agrovet**.

**Dan Meagher, President and CEO of Novus International**, said, "The power of branding is very important. Processing of animal products is going to create a new customer experience. Brands are



going to differentiate at the customer level." **Suguna Group's Soundararajan** and entrepreneur **Dr. Manoj Sharma of Mayank Aquaculture** shared their respective learnings from the poultry and shrimp sectors for the benefit of participants of the forum. **Bhupendra Suri of Creamline Dairy** said, "The idea of private players in value-added categories like ghee, paneer and curd is rising fast, with opportunities for new categories like whey drinks."

In the final session, **Dr. Parminder Singh, Professor of Animal Nutrition at Guru Angad Dev Veterinary And Animal Sciences University**, brought up the lacunae in the system. He spoke about technical challenges faced by livestock breeders in implementing standards. Government representatives **Dr. Amit Sharma of the Food Safety and Standards Authority of India (FSSAI)** and **Amit Choudhary of the Bureau of Indian Standards (BIS)** invited participants to liaise and get involved in developing and amending standards. Highlighting the challenges with verification of





reports of milk contamination, **Dr. Raghavendra Bhatta, Director of the National Institute of Animal Nutrition and Physiology**, said, “There is a need for scientific sampling with state-of-the-art laboratories set up to prevent non-compliance.”

The session was moderated by **Dr. P.S. Mahesh, Joint Commissioner and Director of Central Poultry Development Organisation and Training Institute, Govt. of India**. He encouraged members to approach and engage with the government’s representatives for a better future.

Concluding the symposium, **Shri. Tarun Shridhar, former Secretary, AHD**, advised, “Rather than offering subsidies, an enabling policy environment and infrastructure support will nurture entrepreneurs and promote growth. We need to capitalize on our vast land resources, address our productivity issues and plan for changing consumer demands. We must also guard against misleading advertisements. Digitalizing, and having a consolidated voice for the industry will be vital going forward.”



CLFMA offered Mementos, to Sponsors, Government Officials, Special Invitees, Moderators, Speakers, Associations, Press, Event Management Company, etc.as a token of appreciation for their continual support as always.

Mr. Suresh Deora proposed the vote of thanks, sharing gratitude to the government representatives, speakers, sponsors, industry stakeholders, special invitees and attendees for their active participation.

The networking Dinner was enjoyed by all participants.

Overall, CLFMA interacted with various stakeholders in the industry and government on the topic Changing Dynamics of Animal Agriculture in India. The association has diverse membership from across the animal protein value chain including feed manufacturing; poultry, dairy, and aquaculture business; animal nutrition and health, veterinary services, machinery and equipment; processing, distribution, and retailing of meat. The program was well appreciated by all the participants.























































## Free Lance Poultry Consultant

DR.MANOJ SHUKLA, a renowned poultry Veterinarian, with 20 years of enriched field experience, now started Free Lance Poultry Consultancy. In the past 20 years have contributed to the development of the hatcheries in various capacities of leading companies across India - Maharashtra, Gujarat, Madhya Pradesh, Chhattisgarh, Orissa, Bihar, West Bengal, Jharkhand, North-East, Uttar Pradesh and neighbouring country of Nepal.



### His areas of expertise include:

- Commercial Layer Management.
- Commercial Broiler Management
- Nutrition (Feed Formulations).
- Breeder Management.
- Sales & Marketing of Day-Old commercial Layer chicks, Broiler chicks & Poultry Feed.
- Sales & Marketing of Broiler Breeder.
- Integration.
- Training to Field staff.
- Field Trial of Drugs & Feed additives.
- Speaker in Technical Seminars.

He can be Contacted at:- **Dr. Manoj Shukla**

A-1,Gaytri Nagar,Phase-II, P.O.Shankar Nagar,Raipur, Chhattisgarh-492007

Mob.No : 09644233397, 07746013700, Res. 0771-4270230

Email : [drmanu69@gmail.com](mailto:drmanu69@gmail.com)

As a strategic partner, Poultry Line wishes Dr. Shukla every success in his new assignment



THE OCEANS  
PROVIDE US  
UNLIMITED GIFTS  
IN THE FORM OF  
**SEAWEEDS**  
WE BRING THEM  
TO YOU  
IN

**BOT**

**BIOMARK ORGANIC TRACEMIN**

THE ONLY COMBINATION OF  
**GLYCINATE TRACE MINERALS**



**NUTRIENT RICH SEAWEEDS**  
FOR DESIRED GROWTH AND  
MAXIMUM PERFORMANCE.

Marketed By:



311, 3rd Floor,  
Ascot Center Co-op Soc.Ltd.,  
Sahar Road, Near Hilltone Hotel,  
Opp ITC Maratha Hotel,  
Andheri (East), Mumbai - 400099.  
Maharashtra, INDIA  
TEL.: (022) 28200426/27/28.  
E-mail: info@exoticbiosolutions.com  
www.exoticbiosolutions.com

Manufactured By:



**Exotic**  
**MUSHROOMS**

Survey No - 556, Village Bhadane  
Saralgaon - Kinhavali Road,  
Tehsil - Murbad,  
Dist: Thane - 421 401.  
Maharashtra, INDIA  
Customer Care No: 8655068108



Manufacturing Unit  
is certified for  
leading Industry Standards



**BOT is the ONLY PRODUCT** made  
from Nutrient Rich Tropical  
Seaweeds and Glycine  
chelates.

**BOT is a natural source of Trace  
Minerals, Calcium, Potassium,  
Vitamins A, E & C,  
Anti-Oxidants, Anti-Microbials  
and many other nutrients.**

**This unique combination of  
Seaweeds and Glycine chelates  
results in maximum absorption  
of trace minerals in Birds**

**To meet the mineral  
requirements of your bird, use  
BOT regularly.**



Uncover the true potential of your feed . . .

# MAXIZYME EX

Multi-enzyme Formulation Enriched with Probiotics



## Maximizing Nutrition with flexible feed formulation



Thermal & Gastric  
stability



Enhanced gut integrity  
& health



Standardized optimum  
CP & ME replacement



Improved performance  
& economics



Maximizes fiber  
hydrolysis & nutrition



Improved carcass  
yield



### ROSSARI BIOTECH LIMITED

(An ISO 9001:2015 & 14001:2015 Certified Company)  
201 A - B, 2nd Floor, Akruti Corporate Park, L.B.S Marg, Next to GE Gardens,  
Kanjurmarg (W) Mumbai - 400078, India.

+91 22 6123 3800

info@rossari.com

www.rossari.com



Best Supportive Solution in Liver Disorder



# Caritol™

A Superior Hepatoprotector

Helps in Rapid  
Regeneration of  
Damaged  
Hepatocytes

Regulates Intestinal  
Transit & Prevent  
Abnormal  
Droppings

Lipotropic  
Property

Detoxifies  
Toxins



Highly Recommended to Control **IBH**

Recommended Usage [ 100 Birds for 5 to 7 days ]

Chicks : 5 ml • Broiler : 10 - 20 ml • Layer : 20 - 30 ml • Breeder : 30 - 40 ml

PRESENTATION : 1 Ltr. & 5 Ltr.

Vetoquinol India Animal Health Pvt. Ltd.



## PRESS RELEASE

# Vets In Poultry (VIP) Celebrating “Eggs for Better Life” World Egg Day 2022

India is one of the fastest growing countries in terms of population, economy, infrastructure, information technology and other segments. In spite of the high growth rate in India, poverty, malnutrition, nutritional security remains serious and persisting concerns. Child malnutrition is a chronic problem and a longstanding challenge for the public administration of India.

World Egg Day was celebrated across the globe on Friday 14, October 2022. Theme for Year 2022 was Eggs for better life. Vets In Poultry, association based in Pune having more than 1000 members actively working in Poultry Farming has also actively celebrated World Egg Day all over India. Activities were decided under the guidance of Dr Ajit Ranade, Technical Advisor, Vets In Poultry, Dr Ajay Deshpande, President, Vets In Poultry and Dr V R Kulkarni, Vice President, Vets In Poultry along with executive committee members and newly appointed Regional Heads for Vets In Poultry.

Objective was to create awareness among common people about health benefits of Eggs and also

remove myths. Team Vets In Poultry tried to convey message through banners and verbal presentations that Eggs are amongst the most nutritious foodstuffs available with one large egg providing 13 essential vitamins and minerals, including Vitamin A for eye health, Vitamin D for bone health and choline for brain development, along with high-quality protein.

Malnutrition is one of the bigger challenges in India and it's not a condition affecting only the poor, it cuts across all social-economic groups across India. Undernutrition is caused by the insufficient intake and/or inadequate absorption of energy, protein, or vitamins and minerals (micronutrients) that in turn lead to nutritional deficiencies. A majority of the time, this happens due to a lack of awareness about nutrition and myths about various food items. Team Vets In Poultry reached many orphanage homes, Old age homes, Sports groups, Schools, Colleges and common people to create awareness about ongoing Protein Malnutrition in India and explained how eggs can play role in alleviating malnutrition. This was very innovative initiative by team Vets In Poultry.

## GLIMPSES OF THE EVENT AT VARIOUS PLACES IS GIVEN BELOW



Dr Ravinder Reddy Telangana celebrated World Egg Day at School



Dr Shaitan Singh Rathore Celebrated World Egg Day with underprivileged children and Phagwara location in Punjab





**Dr Santosh Ire & Dr Shyam Vane Celebrated World Egg Day with Children at orphanage home & Old Age at Apla Ghar in Pune**



**Dr Sachin Ingewar celebrated World Egg Day at Nagpur**



**Dr Rais & Dr S R Anand celebrated World Egg Day with college students in Anand, Gujarat**



**Dr Rathod, Dr Anil Phadke & Team celebrated World Egg Day with different school and sports group in Nashik**



**Dr Jeevan Sonawane, Dr Atul Patil & Dr Nitesh Kadam celebrated World Egg Day at Girija Old age & orphanage home in Kharghar, Navi Mumbai**

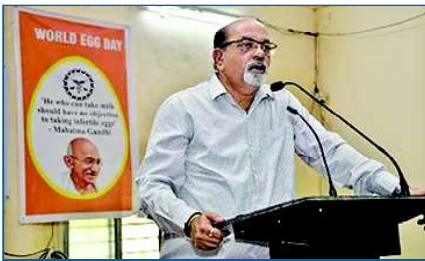




**Dr Jeevan Sonawane celebrated World Day with Cricket Saga sports children in Dombivali Mumbai**



**Dr Jeevan Sonawane Celebrated World Egg Day with Society Members in Dombivali**



**Dr Ajit Ranade Celebrated World Egg Day with students at Mumbai Veterinary College**



**Dr Shivaji Bhosale Celebrated World Egg Day at School in Solapur**



**Dr Mahendra Singh Celebrated World Egg Day Jabalpur**





**Dr Sahebrao Rathod & Team Celebrated World Egg Day with school children in Nashik**



**Dr Mukund Kadam celebrated World Egg Day with students at Nagpur Veterinary College**



**Team IVPI celebrated World Egg Day with students at Bangalore Veterinary College**



**Dr Bimal & Team celebrated World Egg Day with students at Bhuvneshwar**



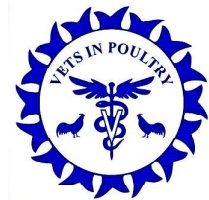
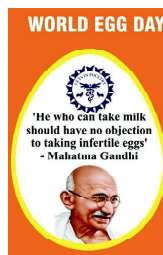
**Dr Banibrata Maity & Team celebrated World Egg Day with students at Bhuvneshwar**





### Need to work together

Over the course of time, various governments have initiated several large-scale supplementary feeding programmes aimed at overcoming specific deficiency diseases to combat malnutrition. This includes programmes such as the distribution of prophylaxis against nutritional anaemia, the Special Nutrition Programme, the Balwadi Nutrition Programme, the ICDS programme, and mid-day meal programmes. Although these programmes are yielding some results, they need to work aggressively on this front. Animal protein sources like milk, eggs, and chicken can play a significant role in alleviating malnutrition in India. Fighting with malnutrition requires national level planning, detecting malnutrition and intervention and nutritional education. We all need to create more awareness about



daily protein requirements and sources of protein. Vets In Poultry appeal all Poultry producers, government authorities, social media influencers, dieticians, medical practitioners, the National Institute of Nutrition, or the Indian Council of Medical Research to align with one goal of fighting malnutrition. Investing in the first 1,000 days from conception to a child's second birthday shapes the future of the nation. Ending stunting and other forms of undernutrition saves lives, improves health and prospects for children, and improves overall development progress. This makes the fight against undernutrition a national imperative.

**As part of encouraging the talent in students, we have started publishing the chicken promotion and invite our readers to send such poetry type for publication.**

## Chicken my favourite food

Chicken my favourite food,  
I eat it in a happy mood.  
I feel sad and I cry,  
But I become happy when I eat chicken fry!

Chicken fry my favourite dish,  
But I don't like fish.  
When I play Cricket I become the winner  
Then I eat chicken dinner!

Chicken is a healthy food,  
After eating, I enjoy and feel good.  
I eat chicken to become strong.  
It keeps me fit for day long.  
My mother also prepare chicken chop,  
But I like most Chicken momo and lolypop !



Master **Medhansh Sikhar Sarma**  
S/o. Dr. Mihir Sarma,  
Jr. Scientist, AAU, Guwahati  
Class-V, NPS International School,  
Guwahati, Assam.

# WEDDING BELLS

## Abdullah Aleemuddin Baksh

(Son of Mr. & Mrs. Mohammed Aleemuddin Baksh)  
Got married with

## Khatija Begum

(Daughter of Mr. Mohammed Iftekhhar Ahmed)

On 20th October 2022, Thursday, 9.00 p.m

**Venue:** Classic Convention Three, Shamshabad, Hyderabad.

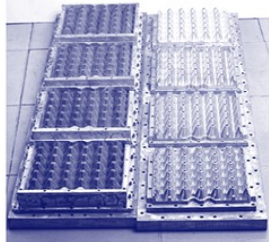
The wedding was well attended by poultry fraternity  
and blessed the couple

The team of **Poultry Line** wish the couple a long,  
happy and prosperous married life



### S.S. PACKAGINGS

**Mfrs.:**  
**Corrugated Boxes,  
Cores Pulp trays, Coir**



**Contact : T. Subramanyam  
Managing Partner**

H.No. 5-011/6, Ramireddy Nagar,  
IDA, Jeedimetla, Hyderabad-500 055.  
Email: slpc.2002@gmail.com

**Cell: 98660 75805 Fac. : 040-23095996**



### SRI LAKSHMI PACKAGING COMPANY

**Mfrs.:**  
**Corrugated Chick Boxes &  
Hatching Egg Box  
Paper Pulp trays, Coconut Coir**

**Contact : P. Someswara Rao  
Managing Partner**

Plot No. S-15 to S-18, Rami Reddy Nagar,  
IDA, Jeedimetla, Hyderabad-500 055.  
Email: slpc.2002@gmail.com

**Cell: 98491 09478 Fac. : 040-20005996**



**NATIONAL EGG CO-ORDINATION COMMITTEE**

DAILY / MONTHLY EGG PRICES DECLARED BY NECC AND PREVAILING PRICES AT VARIOUS PRODUCTION CENTRES (PC) AND CONSUMPTION CENTERS (CC) OCTOBER 2022

Name Of Zone / Day	1	2	3	4	5	6	7	8	9	10	11	12	13	14	15	16	17	18	19	20	21	22	23	24	25	26	27	28	29	30	31	Average
<b>NECC SUGGESTED EGG PRICES</b>																																
Ahmedabad	462	464	466	466	450	455	460	462	464	464	464	464	466	466	466	450	450	455	460	465	470	475	480	505	530	535	535	535	535	535	535	477.1
Ajmer	423	426	426	426	430	435	436	436	436	436	445	445	445	445	430	420	423	430	430	432	438	451	456	463	501	501	501	501	493	493	505	449.29
Barwala	422	424	424	412	415	419	423	426	426	430	435	435	435	435	423	420	422	425	427	429	431	434	445	461	490	493	493	493	493	493	501	443.03
Bengaluru (CC)	440	430	430	430	430	430	435	435	440	440	440	445	445	445	445	445	445	445	450	450	455	460	465	475	485	505	510	510	510	515	515	458.23
Brahmapur (OD)	451	451	451	451	445	445	445	445	445	453	453	453	453	453	460	460	460	460	465	465	468	472	475	490	500	510	510	510	510	510	510	468.9
Chennai (CC)	450	430	430	430	430	430	430	430	430	450	450	450	460	460	460	460	460	460	460	470	470	480	490	510	530	530	530	530	530	530	470	
Chittoor	443	423	423	423	423	423	423	423	443	443	443	443	443	443	453	453	453	453	453	463	463	473	483	503	523	523	523	523	523	523	523	463
Delhi (CC)	441	445	445	445	445	432	437	441	445	447	447	455	457	457	457	457	443	443	446	452	452	455	457	470	487	515	515	515	515	515	462.77	
E.Godavari	430	430	430	430	420	425	430	430	430	430	430	435	435	438	438	438	438	438	441	444	444	449	452	455	470	485	495	500	500	503	450.81	
Hospet	400	390	390	390	390	390	395	395	400	400	400	405	405	405	405	405	405	405	410	410	415	420	425	435	445	465	470	470	475	475	418.23	
Hyderabad	398	401	401	390	390	401	406	409	412	412	412	417	417	417	417	407	395	400	405	410	415	420	425	430	455	480	490	490	490	490	493	428
Jabalpur	426	426	426	426	415	415	415	421	421	421	425	427	427	427	439	429	429	429	435	437	442	455	470	485	500	510	515	522	522	522	522	454.16
Kolkata (WB)	497	497	497	497	490	490	490	490	490	490	495	500	500	500	510	515	515	515	515	515	515	520	530	545	555	560	560	560	548	570	518.03	
Ludhiana	422	422	425	425	425	425	425	426	428	428	433	436	436	436	436	426	424	424	427	427	430	433	437	452	469	491	491	491	491	494	442.77	
Mumbai (CC)	455	459	462	462	452	452	462	467	470	473	473	473	477	477	477	477	462	462	467	472	477	482	487	492	517	540	550	550	550	550	486.32	
Mysuru	442	432	432	432	432	432	437	440	445	445	445	447	447	447	447	450	450	453	453	453	458	465	470	480	490	510	510	512	512	515	461.29	
Namakkal	410	410	410	410	410	410	410	425	425	430	430	430	435	435	440	440	440	440	440	445	445	460	460	475	475	500	500	500	500	510	445.97	
Pune	448	450	452	452	452	452	457	462	465	468	468	468	473	473	473	473	473	463	463	468	478	483	488	493	518	540	550	550	550	555	484.13	
Raipur	428	431	434	434	434	434	434	434	434	434	437	440	440	440	440	440	430	430	438	445	450	462	475	490	505	521	521	521	515	515	460.71	
Surat	465	470	470	470	470	470	470	475	478	480	480	480	483	483	483	460	460	465	470	475	480	485	490	495	520	550	550	550	550	550	491.19	
Vijayawada	430	430	430	430	420	425	430	430	430	430	430	435	435	438	438	438	438	441	444	444	449	452	455	470	485	495	500	500	500	503	450.81	
Vizag	430	430	430	430	430	430	430	430	430	430	430	435	435	435	440	440	440	440	445	450	455	460	462	500	500	500	500	500	500	505	454.42	
W.Godavari	430	430	430	430	420	425	430	430	430	430	430	435	435	438	438	438	438	441	444	444	449	452	455	470	485	495	500	500	500	503	450.81	
Warangal	400	403	403	392	392	403	408	411	414	414	414	414	419	419	419	409	397	402	407	412	417	422	427	432	457	482	492	492	492	495	430	
<b>Prevailing Prices</b>																																
Allahabad (CC)	457	462	462	462	462	462	467	467	467	467	467	467	467	467	467	457	457	462	467	471	486	500	524	552	557	557	557	548	548	552	488.13	
Bhopal	430	430	430	430	435	435	435	435	435	435	435	435	435	435	435	435	430	435	450	455	465	480	480	480	480	500	515	515	515	490	456.26	
Indore (CC)	440	435	435	425	434	435	435	435	434	440	440	440	440	440	436	430	430	430	445	450	455	460	470	485	500	521	525	525	515	525	461.94	
Kanpur (CC)	443	443	443	443	443	443	452	452	452	462	462	462	462	462	462	462	462	462	462	462	462	476	490	505	519	529	529	529	538	475.19		
Luknow (CC)	480	480	480	480	480	480	490	490	490	500	500	500	500	500	500	490	490	490	490	490	490	490	500	509	527	550	550	550	560	504.06		
Muzaffarpur (CC)	482	482	485	475	475	478	480	482	482	487	494	494	494	495	495	495	480	485	488	492	495	495	503	525	550	550	550	545	545	565	502.55	
Naapur	445	445	445	445	445	445	445	445	450	450	450	450	450	450	440	440	430	430	460	470	470	501	525	525	525	550	550	540	525	525	474.23	
Patna	482	482	485	475	475	478	480	482	481	487	494	494	494	495	495	495	480	485	488	492	495	495	503	525	550	550	550	545	545	565	502.52	
Ranchi (CC)	481	481	481	481	481	481	486	486	486	486	490	490	490	490	490	490	486	486	490	490	490	495	500	500	524	543	543	543	543	552	499.94	
Varanasi (CC)	480	483	483	483	483	483	483	490	490	493	493	493	493	493	493	483	483	490	490	497	497	500	510	523	533	543	543	543	543	550	503.26	

## BROILER LIFTING RATES FOR THE MONTH OF SEPTEMBER 2022

Place	1	2	3	4	5	6	7	8	9	10	11	12	13	14	15	16	17	18	19	20	21	22	23	24	25	26	27	28	29	30
Hyderabad	95	90	95	100	102	104	106	106	106	106	111	116	125	130	135	135	135	135	135	135	130	125	125	120	120	112	112	105	105	100
Karimnagar	92	87	92	97	99	101	103	103	103	103	111	116	125	130	135	135	135	135	135	135	127	120	120	115	115	111	111	107	107	100
Warangal	95	90	95	100	102	104	106	106	106	106	111	116	125	130	135	135	135	135	135	135	130	125	125	120	120	112	112	105	105	100
Mahaboobnagar	95	90	95	100	102	104	106	106	106	106	111	114	123	128	135	135	135	135	135	135	130	125	125	120	120	112	112	105	105	100
Kurnool	95	90	95	100	102	104	106	106	106	106	111	116	123	130	135	135	135	135	135	135	130	125	125	120	120	112	112	105	105	100
Vizag	95	90	95	105	108	113	115	115	115	118	121	126	130	132	135	135	135	135	135	135	135	133	133	130	130	125	125	121	121	114
Godavari	95	90	95	105	108	110	112	112	112	115	118	123	130	132	135	135	135	135	135	135	132	130	130	126	126	120	120	115	115	108
Vijayawada	95	90	95	105	108	110	112	112	112	115	118	123	130	132	135	135	135	135	135	135	132	130	130	126	126	120	120	115	115	108
Guntur	90	90	97	105	108	110	112	112	112	115	118	123	130	130	132	132	132	132	132	132	129	129	129	125	125	119	119	110	110	103
Ongole	90	90	97	105	108	110	112	112	112	112	115	118																		
Namakkal	66	76	83	88	88	88	88	88	88	88	91	94	97	98	98	100	103	103	103	98	102	102	102	102	102	102	86	86	88	88



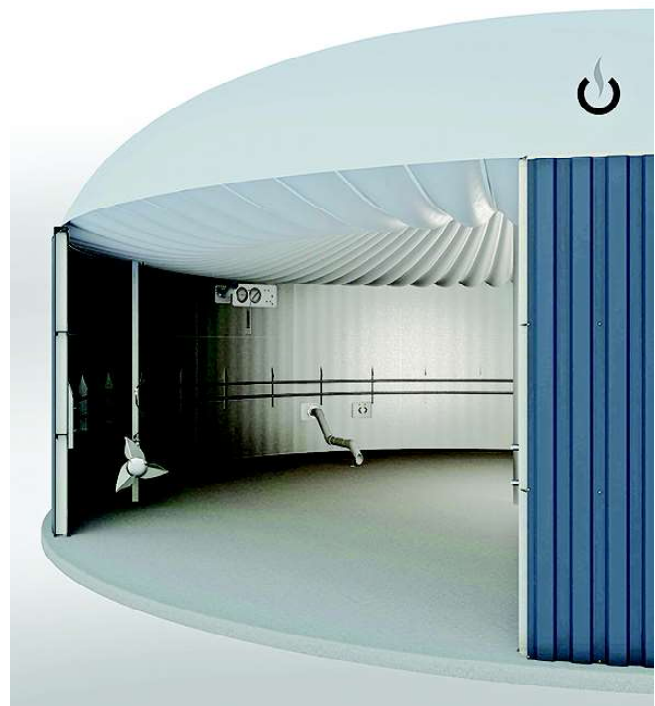
## **WELTEC BIOPOWER presents biogas technologies at Energy Decentral „MINIFerm” small-scale plant concept complements new plant portfolio**

**From 15 - 18 November 2022, WELTEC BIOPOWER will be presenting its innovative, proven biogas technologies and services in Hall 25, Stand K 10 at the leading Energy Decentral trade fair in Hanover. With the experience of over 350 biogas plants built in 25 countries on 5 continents in more than 20 years, the biogas plant manufacturer is an experienced partner.**

One of WELTEC's strengths is the construction of individual, technically sophisticated solutions made of stainless steel up to a plant size of ten megawatts. Slurry and fermentation residues produced in the biogas process can be processed into water, fertiliser concentrate and valuable solids in a four-stage process using the Kumac treatment technology. This process offers a viable, scalable solution, especially in the current situation where high energy costs are leading to sharply rising fertiliser prices and a significant decline in supply.

To complement its portfolio of new plants, the experienced biogas plant manufacturer is presenting its current „MINIFerm” concept. With this small-scale plant concept, smaller, agricultural businesses as well as medium-sized industrial companies can enter the self-supply market. A major advantage of the 50-80 kilowatt plants is a compact, economical solution for converting even small quantities of pumpable substrates into electricity and heat in a simple and uncomplicated way.

In addition, WELTEC BIOPOWER has a great deal of expertise as a buyer for plants in need of renovation from 1 megawatt. Through in-depth expertise in the technical, administrative and organisational areas, WELTEC ensures EEG-compliant plant operation with thorough modernisation. „By acquiring and operating RED-II certified plants ourselves, we produce biomethane



*To complement its portfolio of new plants, the experienced biogas plant manufacturer is presenting its current „MINIFerm” concept. With this small-scale plant concept, smaller, agricultural businesses as well as medium-sized industrial companies can enter the self-supply market. A major advantage of the 50-80 kilowatt plants is a compact, economical solution for converting even small quantities of pumpable substrates into electricity and heat in a simple and uncomplicated way.*



*Slurry and fermentation residues produced in the biogas process can be processed into water, fertiliser concentrate and valuable solids in a four-stage process using the Kumac treatment technology. This process offers a viable, scalable solution, especially in the current situation where high energy costs are leading to sharply rising fertiliser prices and a significant decline in supply.*

sustainably. In this way, we offer companies with a high environmental impact from GHG quota trading an opportunity to compensate for their greenhouse emissions,” argues WELTEC’s new sales manager Söhnke Neumann.

**Further information on the technologies and services of the biogas plant manufacturer can be obtained by interested visitors at Energy Decentral / EuroTier at the WELTEC BIOPOWER stand (Hall 25, Stand K 10).**

### **Company Portrait**

The **WELTEC** Group from Vechta, Germany, has developed into a globally leading specialist for the construction and operation of biogas and biomethane plants since it was founded back in 2001. The Group designs, plans and sets up energy plants, operates them on a permanent or temporary basis, provides 24/7 service and delivers sustainable usage concepts for output flows, thereby covering the entire biogas value chain.

The establishment of individual, technically mature solutions up to a plant size of 10 MW is one of the strengths of **WELTEC BIOPOWER**. The high proportion of custom-developed components is a key success factor. Moreover, the use of stainless-steel technologies ensures flexible substrate input, quick and inexpensive assembly and a consistently high quality standard, regardless of the location. Following the commissioning, **WELTEC’s** mechanical and biological service plays a significant role in ensuring the plant efficiency.

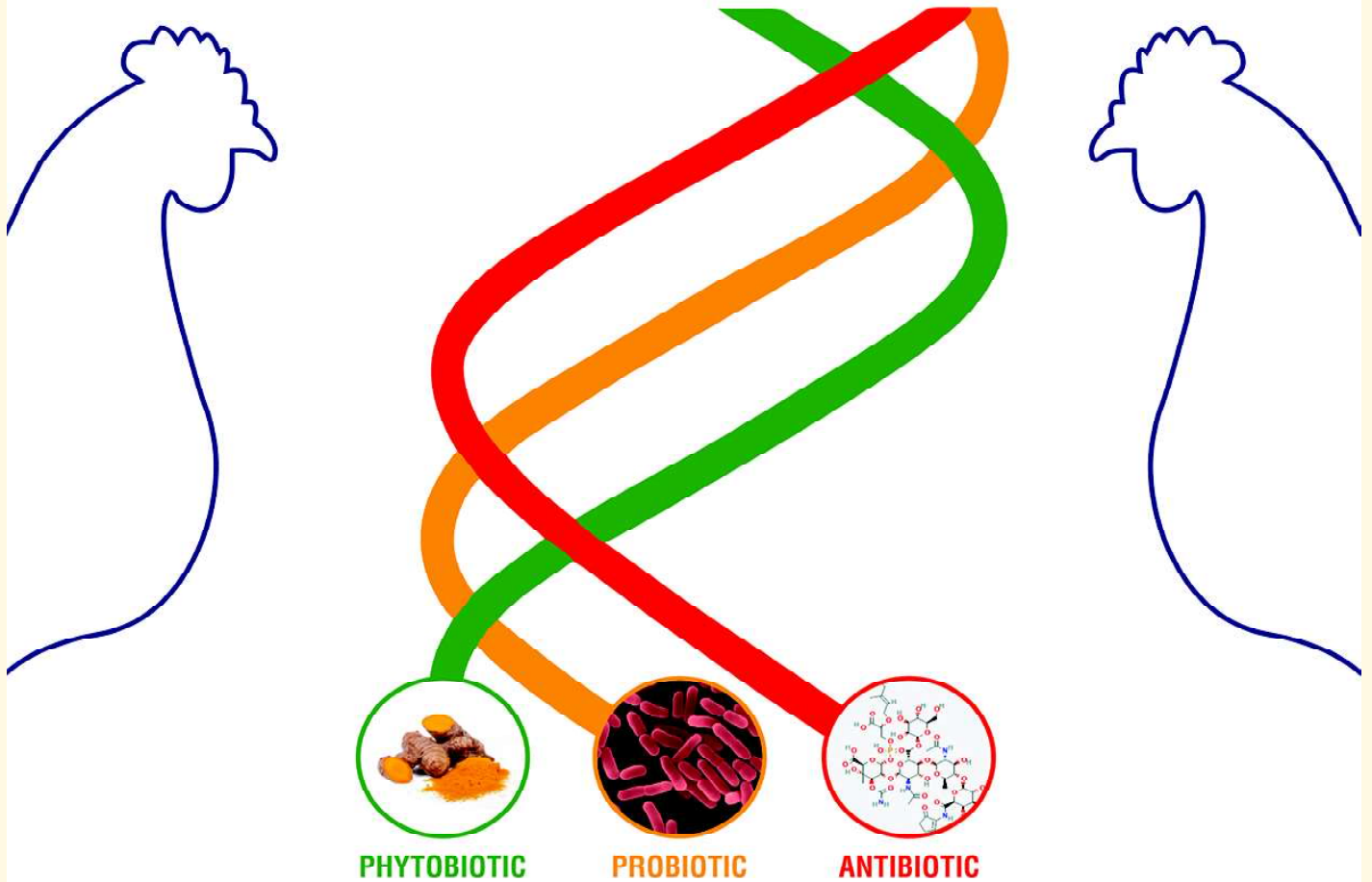
The company also boasts a wealth of experience in the field of biogas generation and utilisation. The company’s nine decentralised plants generate 96 million standard m<sup>3</sup> of biogas a year. A portion is processed to biomethane and made available to energy suppliers and petrol station operators via the public gas network. Additionally, at 16 locations in Germany— e.g. in the field of horticulture, housing construction and healthcare as well as communities – the biomethane is used for generating heat within the framework of **WELTEC** energy contracting.

The biogas specialist is well aware of the importance of customer and investor proximity. Accordingly, the Group’s sales and service network spans the entire globe. The range of customers includes businesses from industries such as agriculture, food, waste and wastewater. So far, the 120 employees of the **WELTEC** Group have implemented more than 350 energy plants in 25 countries on five continents. All in all, the biogas specialist ensures annual savings of around 530,000 tons of CO<sub>2eq</sub>.



# BAMBERCIN® PLUS

## The Novel & Potent **TRIBIOTIC**



**The 1<sup>st</sup> of its kind & Synergistic 3 in 1 Feed Premix for Poultry**  
for

- Healthy birds
- Optimal gut microflora
- Reduction in FCR
- Better immunity & disease resistance
- Wholesome meat & eggs
- Improvement in profits

**Provet Pharma Private Limited**

No. 9, 1<sup>st</sup> Floor, Chakrapani Street, 2<sup>nd</sup> Lane, Narasingapuram Extension,  
Maduvankarai, Guindy, CHENNAI - 600 032. INDIA  
Telefax: +91 44 2244 2124 / 27 | E-mail: info@provet.in



[www.provet.in](http://www.provet.in)

Facebook: provetppl | Twitter: provetppl | LinkedIn: provetppl

4<sup>th</sup> Expo in Nashik

**INDIA  
POULTRY EXPO 2023**

(Opportunities for all)

A Joint venture of Tezasvi Events & People for Poultry



**22<sup>nd</sup>  
EDITION**

**Date**

**27 to 29  
January 2023**

**Venue:**

The Dome, Thakkar Estate,  
Lavate Nagar,  
Near City Centre Mall, Nashik.



Contact : **TEZASVI EVENTS**

2-1-444/16, 1st Floor, O.U.Road, Nallakunta, Hyderabad - 500044.

Cell: 9849368003, 6309677047

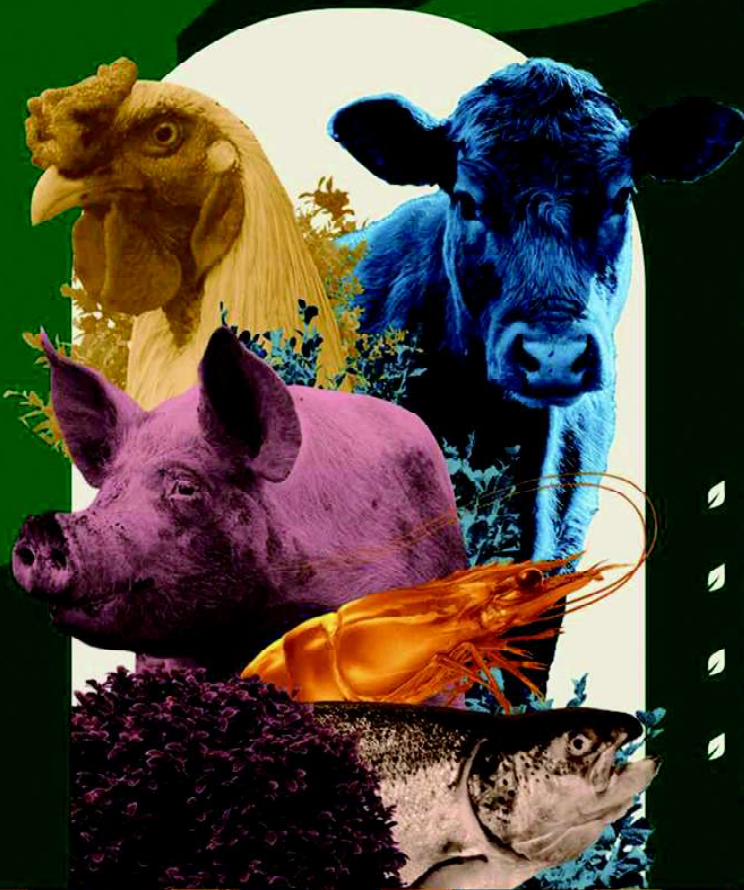
Email: tezasvievents@gmail.com



# The new name in plant-based solutions.

Avitech Nutrition presents PhyGeno a range of plant based solutions (phytogenics) for the feed industry.

PhyGeno combines Ayurvedic knowledge with modern evaluation and manufacturing techniques to offer solutions that enhance the nutritive and safety values of animal feeds.



- ▣ **Avitriol**  
Plant Based Bioactive Vitamin D3
- ▣ **GenoLiv**  
Plant Based Hepatostimulant
- ▣ **Green-C**  
Plant Based Vitamin C
- ▣ **PhyCholine**  
Plant Based Choline

For more details visit  
[www.phygeno.com](http://www.phygeno.com)  
[connect@phygeno.com](mailto:connect@phygeno.com)



**EggMaster**  
100% Farm Fresh



## WHY CHOOSE US

### ○ HEALTHY & HYGIENE

We produce eggs in its most higenic way and meet international safety norms.

### ○ AT YOUR FINGER TIPS

It is easily available in the market. You can buy it from your nearby grocery and super market

### ○ WITH THE BEST QUALITY

We take minimum time to distribute the eggs to reach it to the customers at its freshest.

## OUR PRODUCTS

- White Egg
- Brown Egg
- Country Egg
- Duck Egg
- Quail eggs



## EggMaster Agro Products

Regd. Office : 16/A, Dr. Biresh Guha Street  
Park Circus, Kolkata 700 017  
West Bengal, India.

+91 98 315 07808  
+91 98 310 42545  
[www.eggmaster.in](http://www.eggmaster.in)





**High Quality Cobb 430Y  
Broiler Hatching Eggs**

Contact...

**9831042545**

**EggMaster Poultry Breeders**

Regd Office: No 17/C, 16-2-229 Jamuna Tower,  
Malakpet, Hyderabad - 500036, Telangana,  
Email : [eggmasterbreeders@gmail.com](mailto:eggmasterbreeders@gmail.com)



# SAI KRISHNA

## POULTRY EQUIPMENTS



Chick Feeder



Egg Tray



Chick Feed Tray



Chick Drinker



Drinker  
( Assemble Valve System )



Deluxe Drinker  
( Standard & Large )



Feeder



Gas Brooder



Chain Link Mesh



Jumbo Drinker



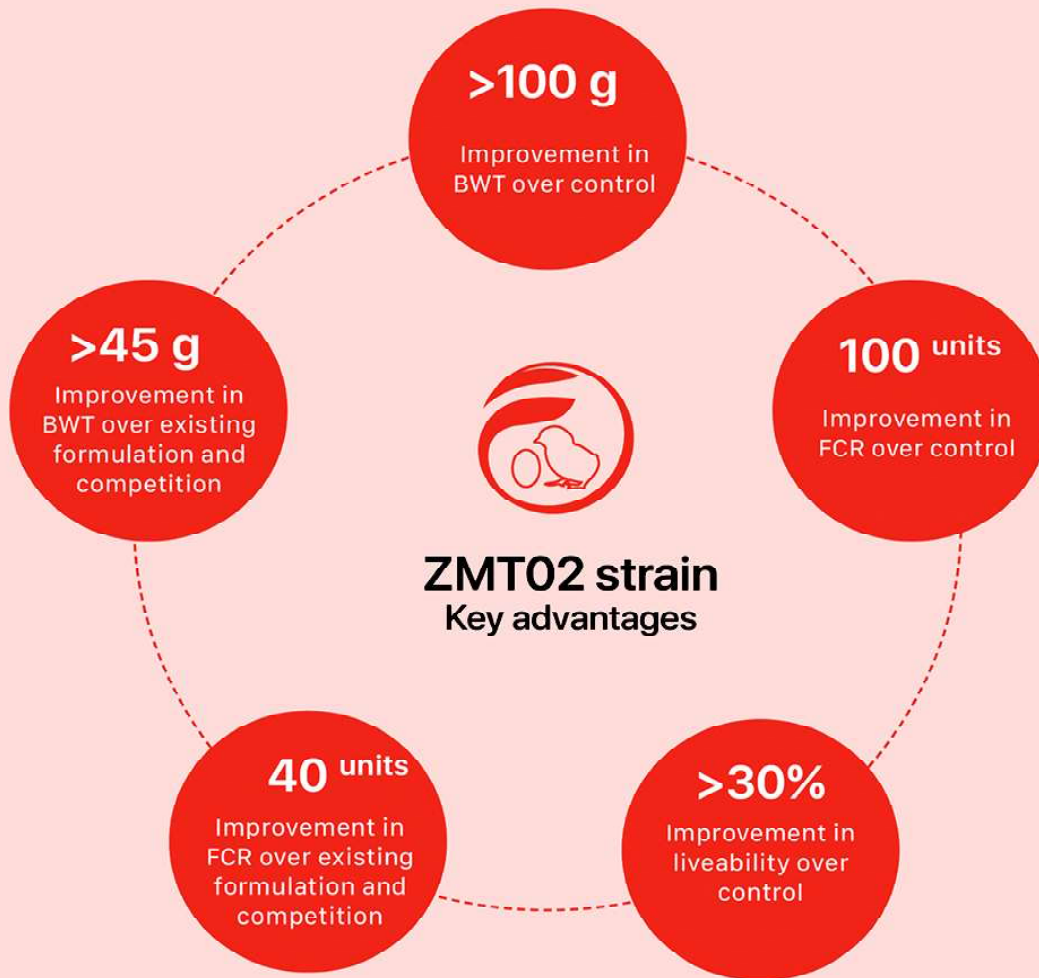
## SAI KRISHNA PLASTIC INDUSTRIES

Manufacturers of Plastic Poultry Equipments

Factory : Behind Petrol Bunk, Padmanagar, Karimnagar - 505002, Tel : 0878 - 6504508, Mobile : 98490 59508  
 Sales Depot : Plot No : 11, Road No:2, Opp : Nimanthran Function Hall, Mamatanagar Colony, Nagole, HYDERABAD - 68. (A.P),  
 Tel : 040 64610508, Mobile : 92466 59508, E-mail : info@saikrishnapoultry.com, Web : www.saikrishnapoultry.com



## The powerful probiotic strain screened and isolated from the chicken gut



## The key to total gut integrity

Zenex AH was formerly Zydus AH

*A new  
dimension in  
mineral nutrition...*

Organic  
trace minerals  
with added  
advantage of  
Chromium and  
Phytoactives for  
better performance.



Optimal calcium  
absorption (Hadjod)

Endurance optimizer  
(Chromium, Lasuna, Shatavari,  
Amalaki and Ashvagandha)

**Himalaya Wellness Company**

Makali, Bengaluru 562 162, India  
www.himalayawellness.com  
E-mail: write.to.us@himalayawellness.com





**Innovax**<sup>®</sup>  
ND-IBD

# MORE POWER TO YOU

## **INNOVAX<sup>®</sup>-ND-IBD - PUTTING YOU IN CONTROL OF WELFARE & PRODUCTIVITY**

MSD Animal Health is helping to shape the future of the poultry industry through continuous innovation.

Innovations such as Innovax<sup>®</sup>-ND-IBD the world's first dual-construct HVT vaccine that offers 3-in-1 protection in a single injection - safeguarding your birds from infection challenges before they even leave the hatchery, without the risks of bursal atrophy or interference with infectious bronchitis vaccination and MDA levels.

To find out more please contact your local MSD Animal Health Innovator today.

**ALWAYS PRODUCING MORE**

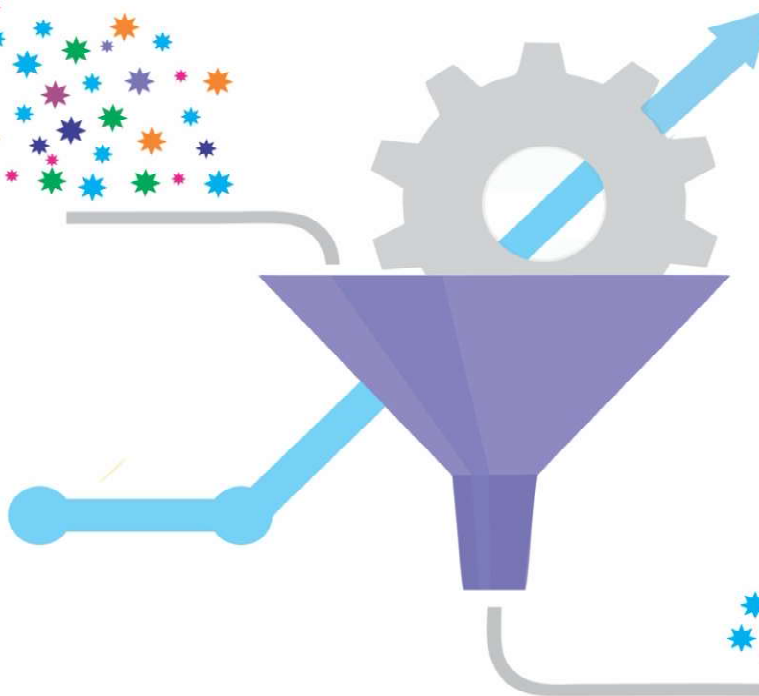
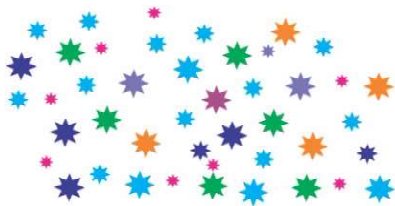


**MSD**  
Animal Health

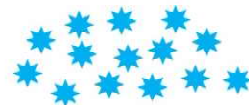





# MASTER CLONE

(Newcastle Disease Vaccine, Live)



**Protection Redefined**



-  **Uniformity in titers (Virus and Antibody response)**
-  **Less vaccinal reaction**
-  **Better immunogenicity**

**VENTRI BIOLOGICALS**

(Vaccine Division of VHPL)

Venkateshwara House, S. No. 114/A/2, Pune-Sinhgad Road, Pune - 411 030. Tel. : +91-20-24251803 Fax : (020) 24251077, 24251060



Email: [ventri.biologicals@venkys.com](mailto:ventri.biologicals@venkys.com)

[www.venkys.com](http://www.venkys.com)